

# Waitākere Ranges Local Board Workshop Record

---

Workshop record of the Waitākere Ranges Local Board held at the Waitākere Ranges Local Board office, 39 Glenmall Place, Glen Eden, Auckland on Thursday, 9 February 2023, commencing at 12.30pm.

---

## PRESENT

**Chairperson:** Greg Presland  
**Members:** Michelle Clayton  
Mark Allen  
Sandra Coney  
Linda Potauaine  
Liz Manley

**Apologies:**  
**Also present:** Adam Milina, Darshita Shah, Brett Lane, Natasha Yapp and Nataly Anchicoque

Workshop Item	Summary of Discussions
Kāinga Ora update Confidential Item Taina Jones, Regional Director, Kāinga Ora Catherine Gilhooly, Stakeholder Relationship Manager 12.30pm – 1.15pm	Board members updated on Kāinga Ora's work in the Wāitakere Ranges local board area.
Tātaki Auckland Unlimited introduction Jan Brown, Manager Local Board Engagement 1.15pm – 2.00pm	Board members provided with a general overview of Tātaki Auckland Unlimited.
Auckland Transport monthly update Owena Schuster, Elected Member Relationship Partner Allyn Sims, PMO Manager Downtown Kimberly McLeod, Consultation Coordinator Bernard Sheary, Principal Project	Auckland Transport staff updated the Board on the current work being carried out including the flood response in the Wāitakere Ranges local board area.

<p>Manager - Central East  Matthew Ah Mu, Principal Project  Manager - I&amp;D  Sila Auva'a,  Raman Singh, Transportation  Engineer  2.10pm – 3.30pm</p>	
<p>Watercare update - flood response  Elizabeth Stewart, Elected Member  Relationship Advisor  3.30pm – 4.05pm</p>	<p>Watercare staff updated the Board on the flood  response in the Wāitakere Ranges local board  area.</p>

The workshop concluded at 4.05pm.



# Tātaki Auckland Unlimited



# What does Tātaki mean?

‘Tātaki’ ascribes a quality of leadership that sets the pace, drives peak performance in a group, maintaining a rhythm that is in sync with the environment.

The Māori and English components of our name together tell the story of the organisation we aspire to be: an agency that leads by example, culturally inclusive, creative, and bold.

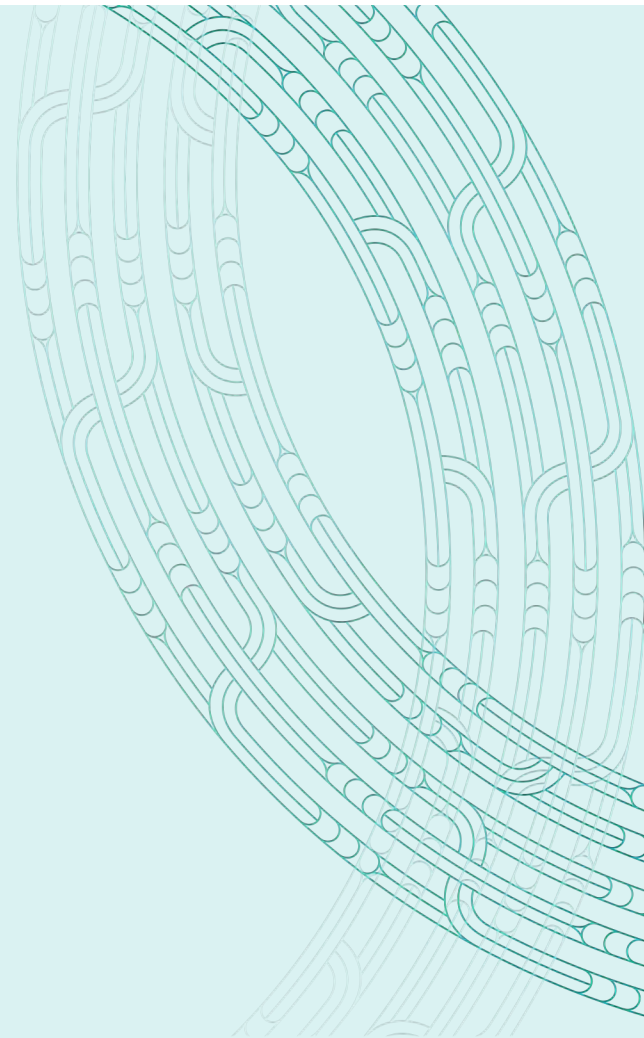
Tātaki Auckland Unlimited purpose

Enriching cultural and economic life in Tāmaki Makaurau



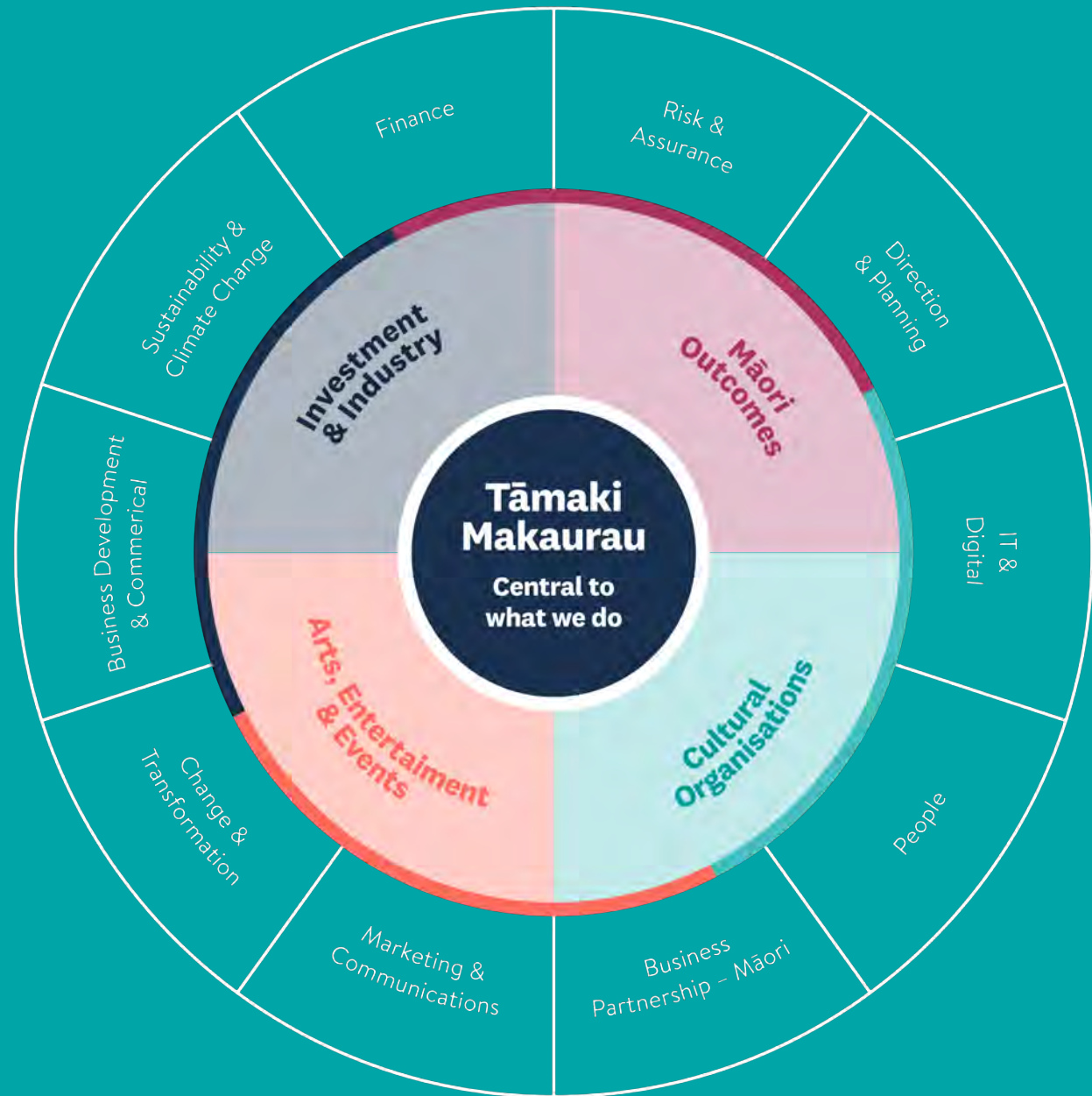
## **Part of the Auckland Council whānau – strategic alignment**

- Auckland Plan 2050
- Development Strategy
- *Kia Ora Tāmaki Makaurau*
- *Te Tāruke-ā-Tāwhiri, Auckland's Climate Plan*
- *Te Mahere Whaneke Ōhanga, Economic Development Action Plan 2021-24*
- *Toi Whītiki Arts and Culture Strategic Action Plan*
- *Auckland Water Strategy*
- Annual Letters of Expectation and Statements of Intent



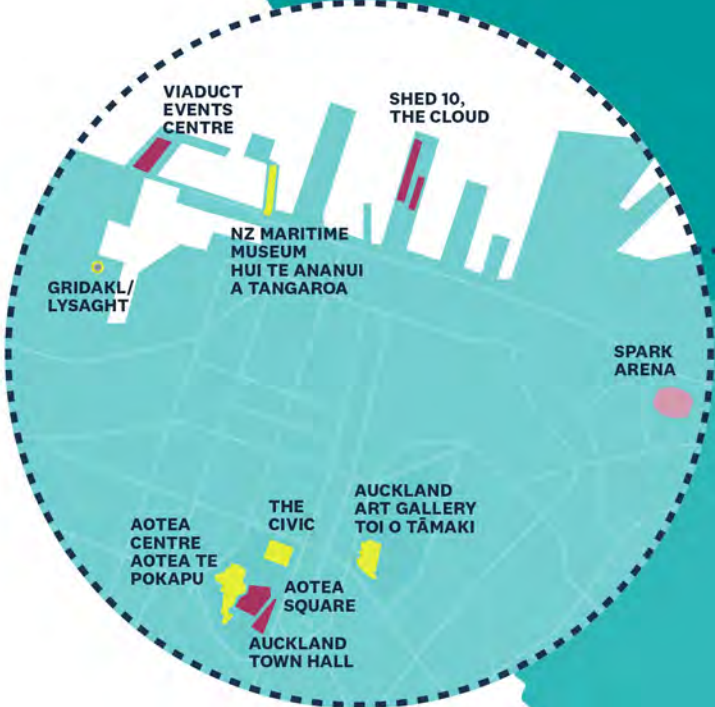
## Cultural and economic development agency

- Four delivery rōpū
- Shared core services
- Regional functions, including:
  - Regional film office
  - Regional tourism organisation
  - Regional facilities and assets – charitable trust
  - Regional investment attraction lead
  - Regional economic development agency





# Tātaki Auckland Unlimited operations



- Owned and operated
- Operated but not owned (managed facilities)
- Owned, but not operated
- Tātaki Auckland Unlimited is the landowner
- Tātaki Auckland Unlimited advises Auckland Council on levy setting and board appointments
- Tātaki Auckland Unlimited provides operational and/or capital funding
- Tātaki Auckland Unlimited facilitates a network of hubs across the region, supporting growth of entrepreneurship in Auckland



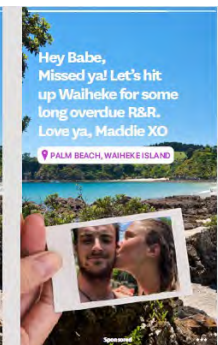
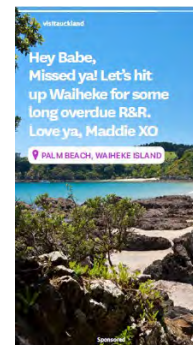
# Experience and participation

- **Cultural assets and organisations**
  - Auckland Zoo
  - Auckland Art Gallery Toi o Tāmaki
  - NZ Maritime Museum Hui Te Ananui a Tangaroa
  - Auckland Live venues, Auckland Stadiums
- **Access, participation and community outreach**
  - Tamariki and rangatahi
  - Under-served communities
- **Events and experiences**
- **Business events and conferences**



# Attraction and promotion

- Promoting Auckland to visitors – overseas and rest of New Zealand
- Screen production attraction
- Investment, business and talent attraction
- Platform for and promotion of Māori identity
  - Tourism
  - Businesses
  - Artists
  - Te Reo Māori
  - Innovation



# Economic development

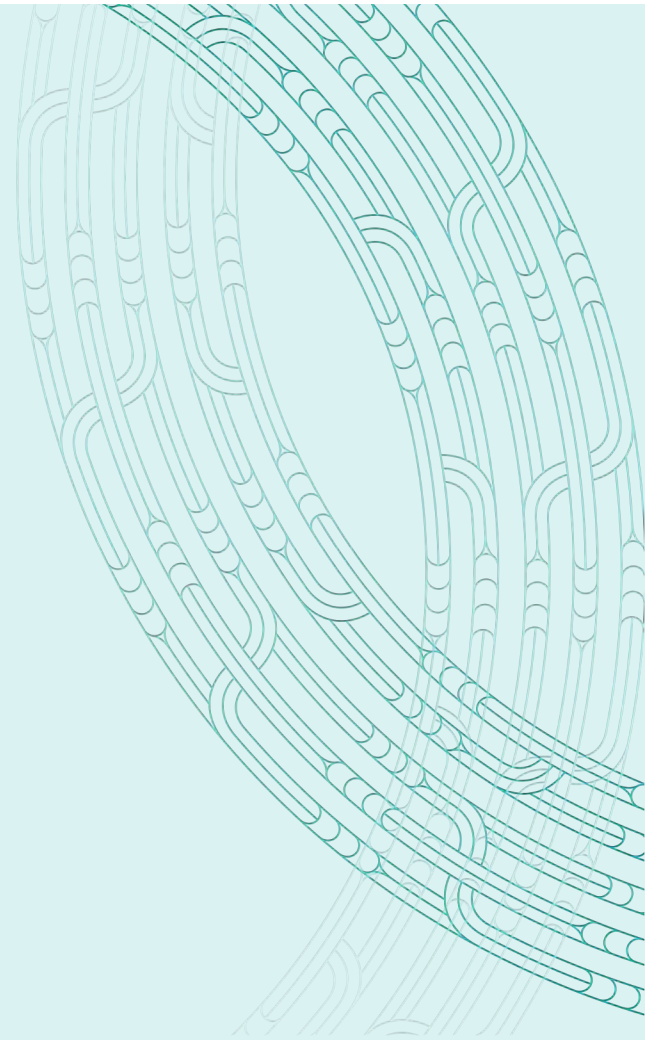
- **Priority sectors we support – opportunity for Auckland**
  - Visitor economy
  - Technology
  - Screen and creative
  - Climate innovation
- **Skills development**
  - Alo Vaka Auckland Pacific Skills Shift
  - Pathways for young people
  - Specialist skills – heritage, conservations, arts
- **Innovation and entrepreneurship precincts**
- **Māori businesses and entrepreneurship**
- **Economic places and precincts**



# Economic places and precincts

Economic development - working to improve economic well-being and quality of life for all our people and our region

- **Evidence-based strategic economic development advice**
  - *Local Economic Overviews* every three years
  - *Auckland Prosperity Index* after every census
  - Strategic advice for Local Board Plans
  - Data and insights - local business and employment trends, business land capacity, market intentions and constraints
- **Supporting Auckland's economic places**
- **Supporting entrepreneurship, youth employment, skills and workforce**
- **Dedicated session on local economic development for local boards**



# Part of the Auckland Council whānau – what other parts do

Other parts of the whānau play important roles in achieving cultural and economic outcomes for Auckland, as well as other regional partners, delivering:



# External Relations Team

- Your initial points of contact at Tātaki Auckland Unlimited
- Supports the organisation's external relationships via relationship owners
- Facilitates local board engagement and reporting
- Produces and distributes elected member newsletters
- Distributes TAU media releases to elected members' support teams for onward distribution
- Supports responses to elected member queries



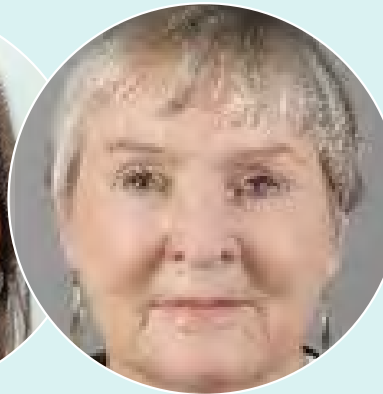
**Melanya Burrows**  
External Relations Manager



**Charlotte Kelly**  
Senior External Relations Advisor  
(Mayor, councillors, central government)



**Tia Verran and Jan Brown**  
Local Boards - 'transitional point of contact' model



# Tāmaki Makaurau Auckland





# COVID-19 – hit harder, recovering more slowly

- Hardest hit region
- Stalled population growth
- Lower GDP growth than rest of New Zealand
- Declining business and consumer confidence
- Increasing inequity – disparate impact on south and west Auckland, Māori, Pacific people, young people
- Our rangatahi disproportionately affected – employment, school attendance, overall wellbeing, tertiary course completions, working hours and income
- City centre decline
- Increasing competition across Asia-Pacific regions and cities – skilled talent, investment, events, visitors

*Our strengths and opportunities?*

# New Zealand's economic powerhouse



**1.72** million

34% of New Zealand's population



**38%**

Share of New Zealand's GDP



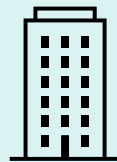
**70%**

visitor arrivals to NZ (Auckland Airport)



**5th**

4.5km<sup>2</sup> city centre is NZ's 5<sup>th</sup> largest regional economy, workplace for 100,000+ people, home to 40,000



**35%**

NZ's workforce  
985,000 labour force; 952,000 employed



**50%**

New Zealand FDI projects 2010-19

# New Zealand's global connector

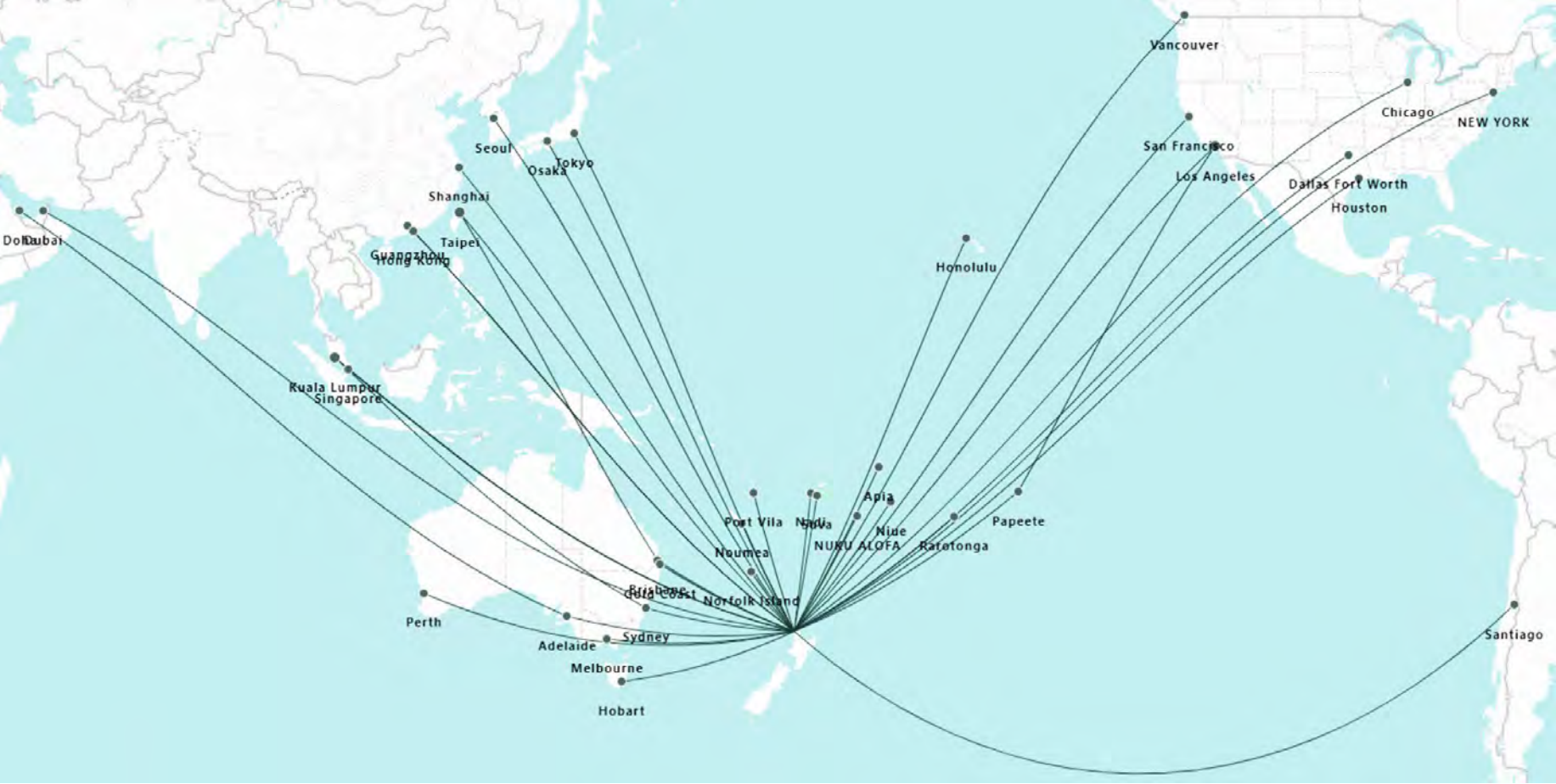
70% of New Zealand's international visitor arrivals fly into Auckland Airport

1 of the 2 largest deep-water ports in New Zealand

Ultra-fast broadband connection across the country and internationally

1 in 3 jobs affected by international trade

41% of Aucklanders born outside of New Zealand



# New Zealand's cultural and creative powerhouse

Social  
connection

Regional  
Identity

Local Pride

Attraction and  
retention

Jobs and skills

Economic  
Benefits

- Auckland Art Gallery Toi o Tāmaki, Auckland Museum Tāmaki Paenga Hira, New Zealand Maritime Museum Hui Te Ananui a Tangaroa, Eden Park, six major film studios, three world-class universities, UNESCO City of Music, MOTAT, Te Tuhi and Te Uru art galleries
- 180 ethnicities, varied and diverse performing arts groups and organisations – world-class contemporary and classical dance; orchestras; opera companies; theatre companies; festivals. Māori, Pacific, Indian, Asian, youth, rainbow, disability community performing arts groups
- Creative industries – music production, architecture, design, publishing, digital media, (screen includes film and television production, gaming, immersive technologies and digital content)

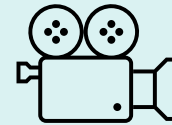
# Opportunities for Auckland



**Technology**



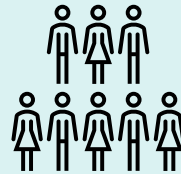
**Visitor economy**



**Screen and creative**



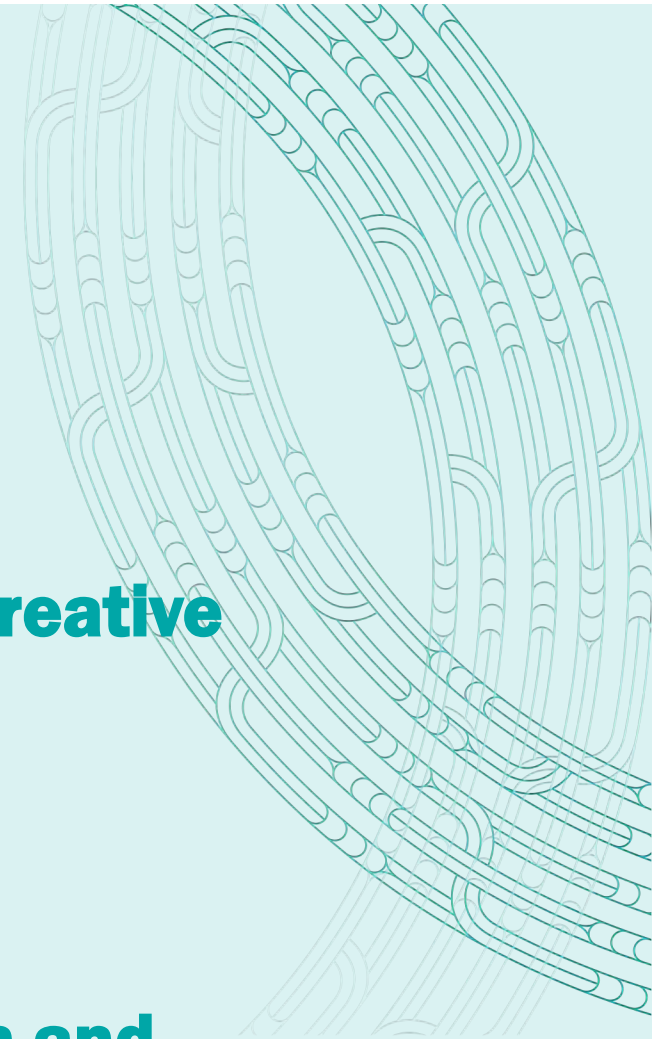
**Climate and sustainability**

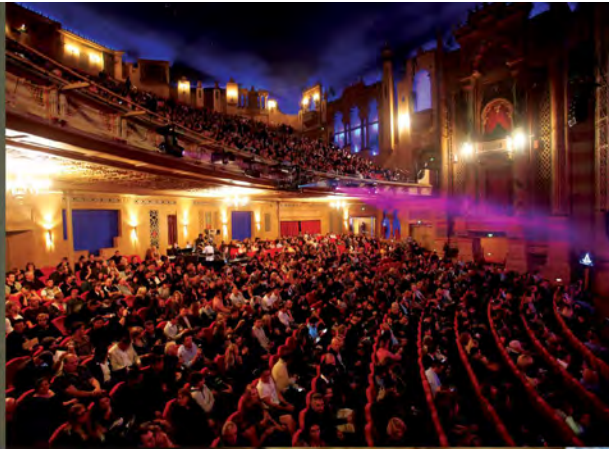


**Diverse, creative, connection, young population**



**Innovation and entrepreneurship**







Tātaki  
Auckland  
Unlimited



AUCKLAND  
UNESCO CITY OF MUSIC  
TĀMAKI MAKAURAU  
UNESCO PĀ PUORO





**Ngā** Tiriti Ngangahau – The Vibrant Streets  
Konini School Safer Streets  
9 February 2023



# Agenda

1. Introductions
2. Auckland Council - Ngā Tiriti Ngāngahau – The Vibrant Streets
3. Konini School Safer Streets
4. Questions, comments and feedback

# Introductions

## Current Team

Allyn Sims – Programme Manager

Kimberly McLeod – Programme Co-ordinator

Antony Hing – Project Manager

Maddison Cooper – Co-Design Lead

Toni Fauonuku - Comms & Engagement Lead

Ramona Toth – Community Transport Coordinator

Charlotte Billing – Monitoring and Evaluation Lead

Owena Schuster – Elected Members Relationship Partner

Iris Li – Project Co-ordinator

## Supporting cast:

Auckland Transport:

- School Liaison – work with schools
- Elected Member Representative
- SME support
- Communication and Engagement Leads
- Financial Management

Place Creative

- Monitoring and Evaluation

*\*Continually developing*





# Ngā Tiriti Ngangahau – The Vibrant Streets

*Let's go there* 

# Ngā Tiriti Ngangahau – The Vibrant Streets Programme

## Overview

The Ngā Tiriti Ngangahau programme is a newly established **\$3 million fund**, to be delivered by Auckland Transport over the first **three years** of Auckland Council's 10-year climate action package.

The programme aims to deliver:

- **trials and tactical urbanism interventions** across the region, outside of the city centre,
- to reduce emissions through **encouraging mode shift to walking, cycling and micromobility**.

The programme was **open to applications from:**

- Local Boards,
- Auckland Council and Council Controlled Organisations (CCOs).
- This opportunity was also extended to Mana Whenua through AT's engagement hui.

Applications went through a robust eligibility criteria and assessment

## Objectives

The primary objectives for the programme are to:

- **reduce transport emissions** and improve air quality co-benefits outside of the city centre by encouraging mode shift to walking and cycling
- **respond to local enthusiasm** for people-friendly streets

The secondary objectives for the programme are to:

- **encourage the use of tactical urbanism techniques / initiatives** that can be rolled out rapidly and at relatively low cost, with a linkage to an existing funding stream to fund a permanent solution if the trial is successful (e.g. projects included for funding in the Regional Land Transport Plan)
- **support Māori outcomes**, for example by encouraging active Māori participation, and improving low carbon access to marae, kura, kohanga, employment and services.

# Ngā Tiriti Ngangahau – Project Map

## Project Name

1. Puketāpapa: he Taunga Pahikara/ a cycling haven

2. Bayswater Ave Cycleway

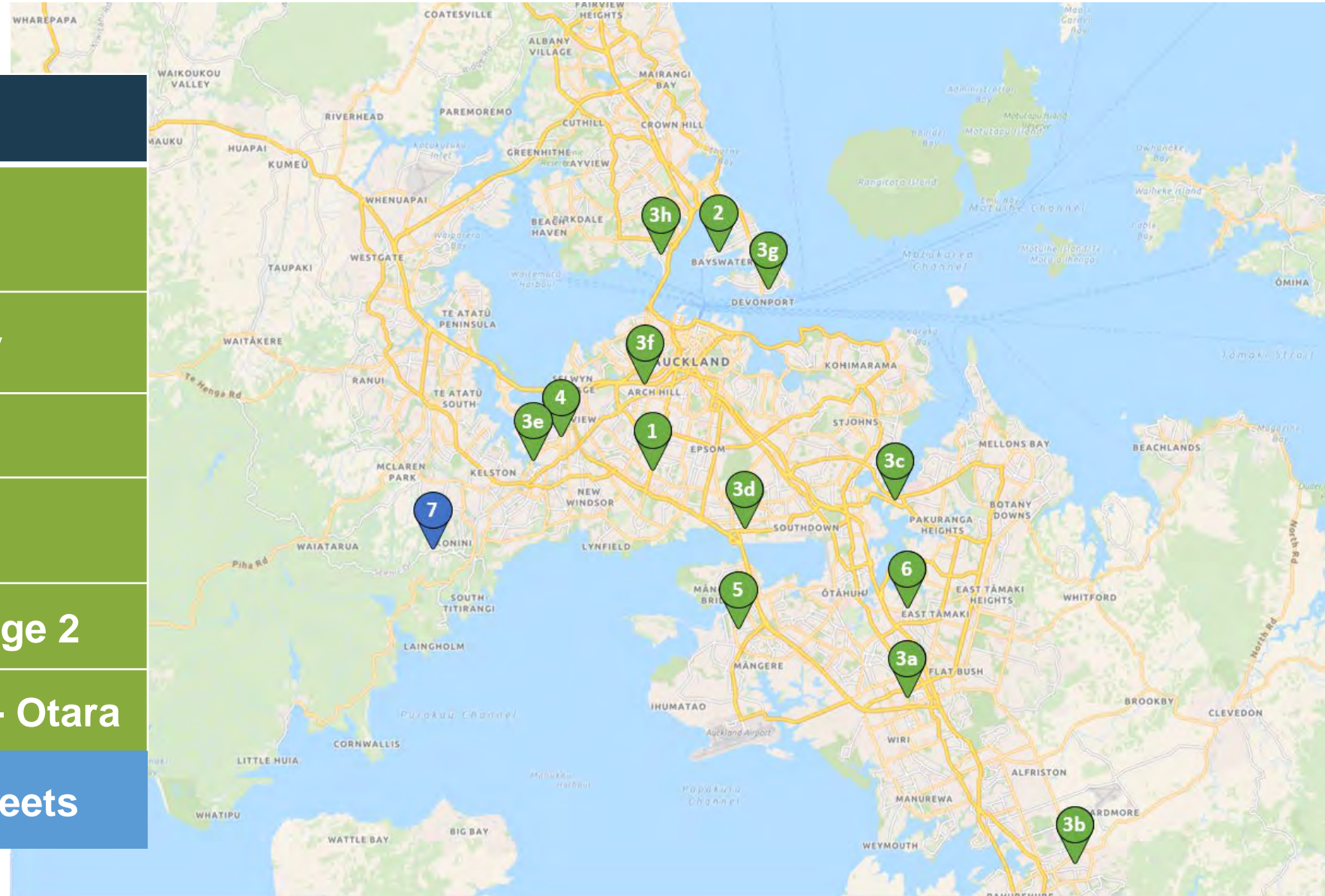
3. Community Bike Hubs

4. Avondale Open Streets Activation

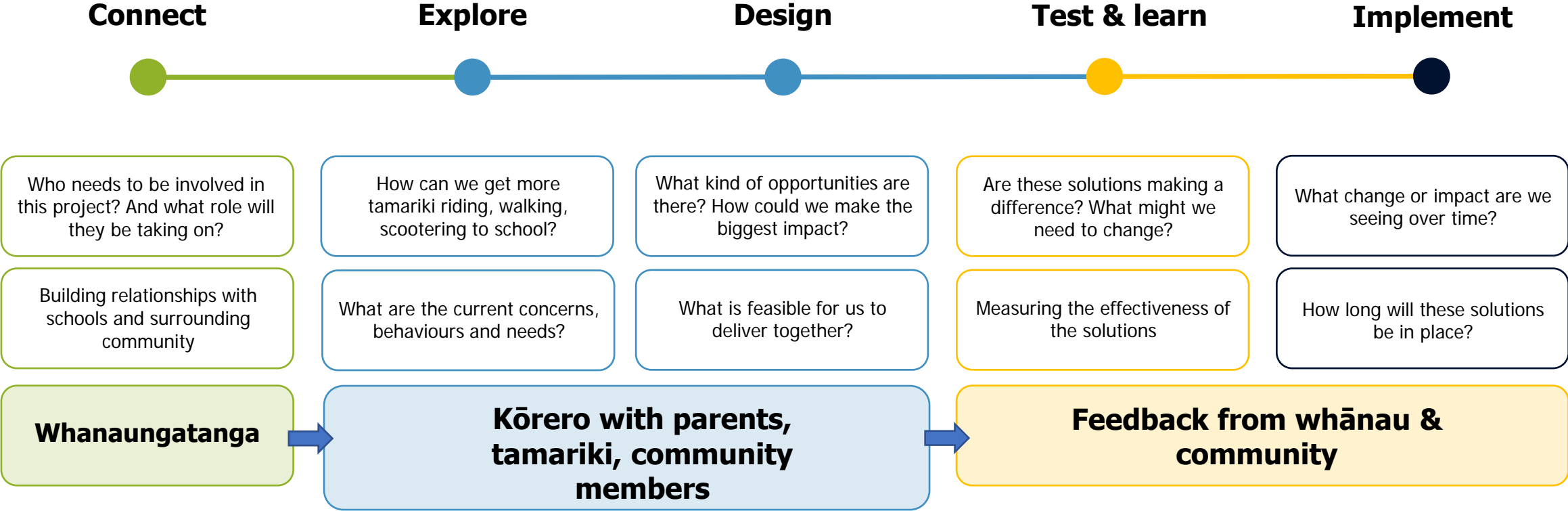
5. Mangere eBike Trial - Stage 2

6. Safe Riding Programme - Otara

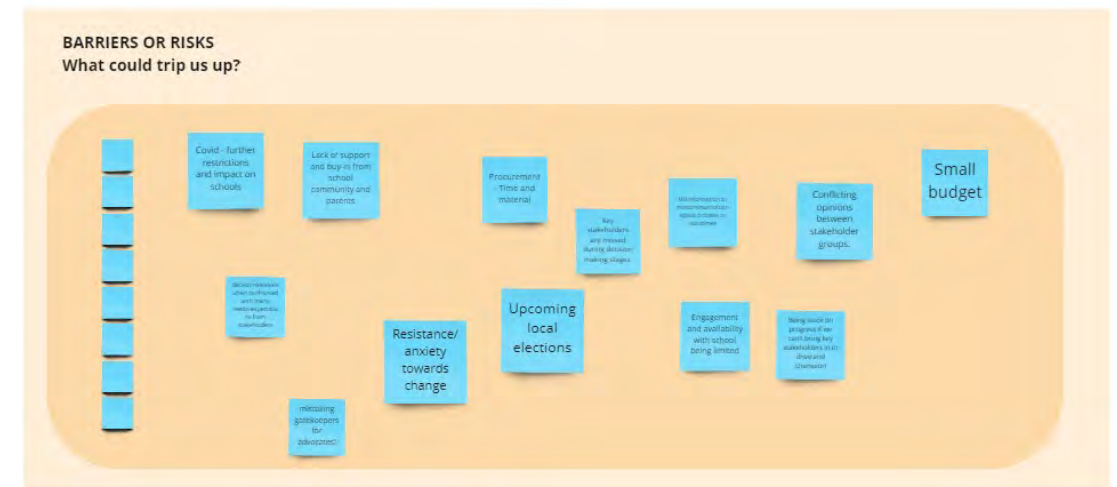
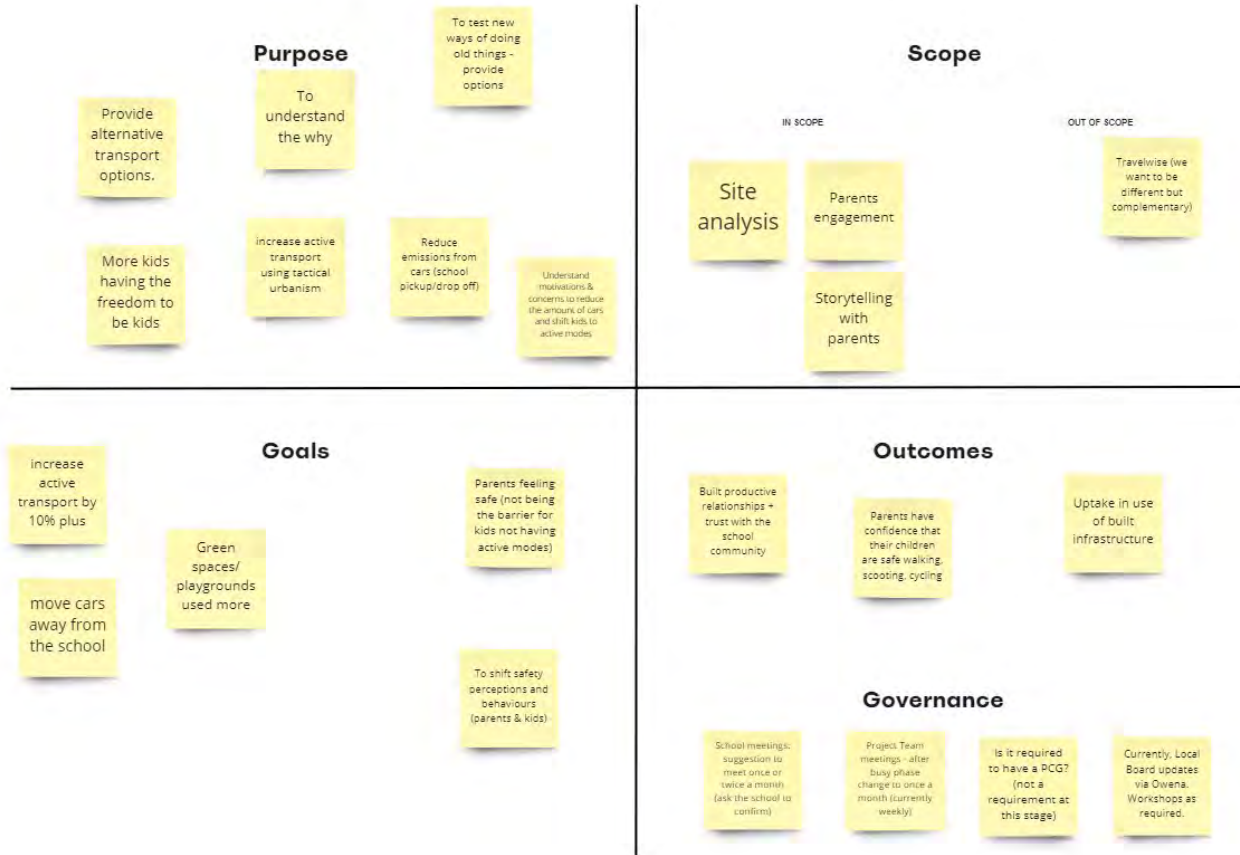
7. Konini School - Safer Streets




# Co-exploring, co-designing & co-delivering



# Shaping Sessions





# Konini School Safer Streets

*Let's go there* 



# Konini School - Safer Streets Purpose and Opportunities

## **Purpose** (from application):

- Increase number of students that walk or cycle to school.
- Increase the safety perception for parents and students and encourage the use of local streets, walkways and to enjoy the experience of walking and cycling to school.
- A reduction in the number of car trips to the school by the local community and therefore less traffic at the school gate and reduction in carbon emissions.

## **Opportunities:**

- Create a more connected community.
- Provide safe active mode travel alternatives.
- Utilise existing infrastructure and compliment programmes already implemented in the area/school (raised crossings, reduced speed limit (30kph speed limit (28/07/2022)), Travelwise programme)
- Activate local facilities including parks and sporting facilities.
- Instill confidence into parents that their children are safe walking, scootering or cycling to school.
- Engage and collaborate with the local stakeholders to produce a solution for their community (Co-Design). Process will be documented and can potentially be used as a blueprint going forward.



# Konini School - Safer Streets Examples and Timeline

## Potential Solutions:

- Improved wayfinding,
- Pop up cycleways,
- Placemaking,
- Behaviour change initiatives,
- Temporary speed calming measures, footpath widening, crossings.
- Combination of the above.



## Current estimated timeline:

- February
  - Konini School Teacher and Staff session.
  - Local community and resident feedback.
  - Local Board Workshop.
  - Arrange meetings/sessions with any other key stakeholders identified.
- March
  - Formal online workshop for stakeholders interested in finalizing scope.
  - Priority short/long list of issues/opportunities to address.
  - Begin co-design phase with local and schooling community to design solutions to issues/opportunities.
- April
  - Socialise/get feedback on solutions.
  - Present to Local Board for endorsement on final proposal.
- May
  - Implement design and begin testing and learning phase.



# What we've done so far

Connect

Explore



We are here

Wheels Day  
50 tāmariki

At the gate sessions x 2  
20-30 adults, 60 tāmariki

Teacher & staff workshop

Student workshop  
50 tāmariki

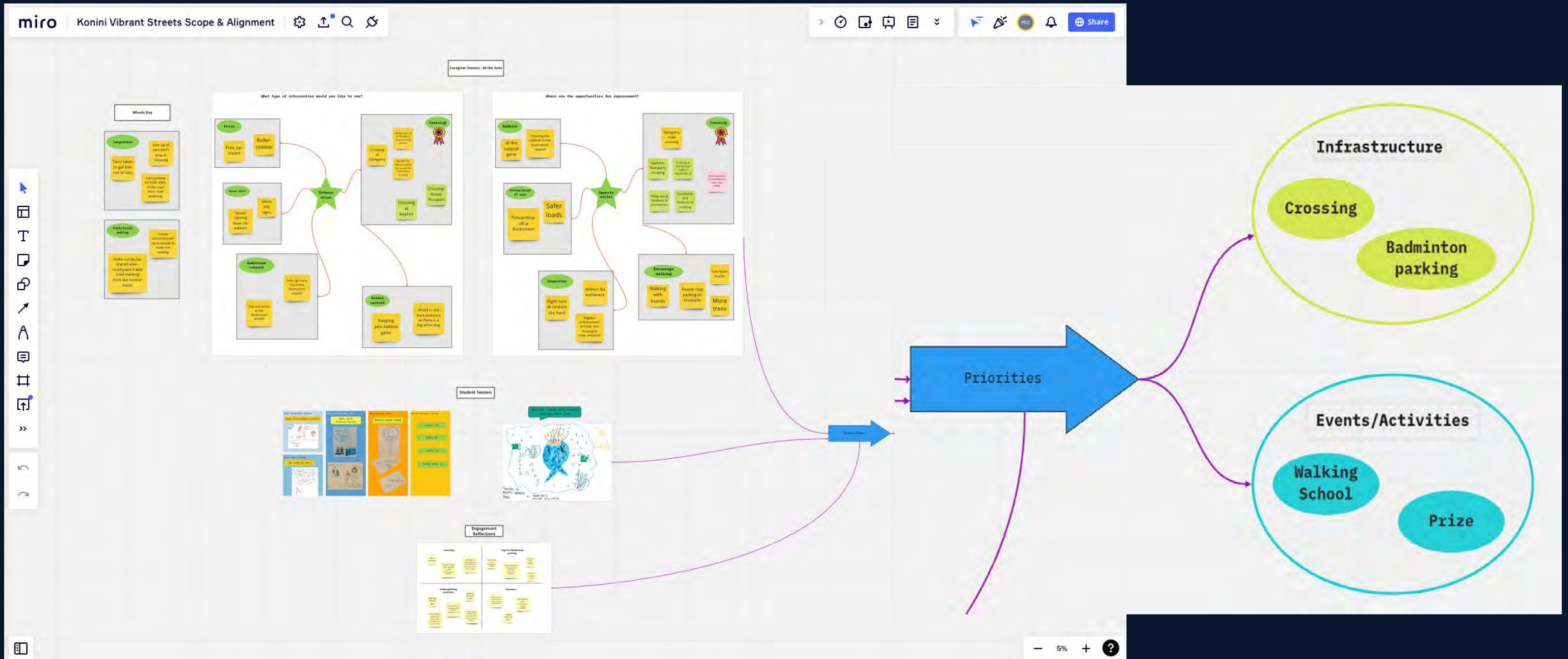
Local Board workshop

Residents & Parents  
workshop

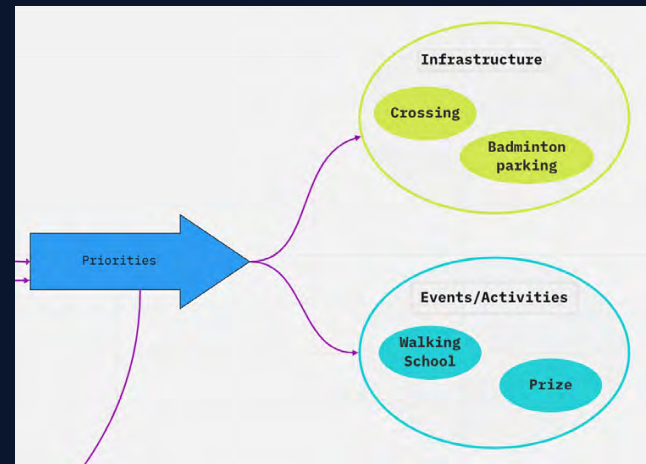
# HOW we distill insights

Feedback										
	A	B	C	D	E	F	G	H	I	J
1	<b>Feedback</b>	<b>Tag</b>	<b>Question</b>	<b>Session</b>		<b>Pivot Table</b>				
2	icecream trucks	prize	opportunities	At the gate		<b>Session</b>	<b>Tag</b>	<b>COUNTA of Tag</b>		
3	walking with friends	encourage walking	opportunities	At the gate		- At the gate	crossing	11		
4	no pollution	air pollution by cars	opportunities	At the gate			prize	7		
5	clean cars and more bikes	air pollution by cars	opportunities	At the gate			Glengarry Road	7		
6	all the rubbish gone	rubbish	opportunities	At the gate			rubbish	6		
7	Glengarry road crossing	Glengarry Road	opportunities	At the gate			Badminton	6		
8	daycare	daycare	opportunities	At the gate			pickup/dropoff zone	4		
9	shops	shops	opportunities	At the gate			speed limit	3		
10	not throwing your rubbish everywhere	rubbish	opportunities	At the gate			plant cover	3		
11	no more rubbish	rubbish	opportunities	At the gate			footpath disturbed by ca	3		
12	less gas/petrol	air pollution by cars	opportunities	At the gate			encourage walking	3		
13	walk to school	encourage walking	opportunities	At the gate			congestion	3		
14	people stop parking on footpaths	footpath disturbed by car	opportunities	At the gate			big animals	3		
15	better grass	plant cover	opportunities	At the gate			air pollution by cars	3		
16	more trees	plant cover	opportunities	At the gate			sports	1		
17	line marking in Badminton carpark	Badminton	opportunities	At the gate			shops	1		
18	regular enforcement to keep cars moving at main entrance	congestion	opportunities	At the gate			school buses	1		
19	all the rubbish gone	rubbish	opportunities	At the gate			Glengarry/Kashmir Roa	1		
20	crossing for Glendale rd	crossing	opportunities	At the gate			daycare	1		
21	people not getting out of the car on the side	footpath disturbed by car	opportunities	At the gate		At the gate Total		67		
22	cleaning	rubbish	opportunities	At the gate		- Wheels Day	congestion	5		
23	Withers Rd bottleneck	congestion	opportunities	At the gate			walking activities	3		
24	people parking in no parkibg zone	footpath disturbed by car	opportunities	At the gate			speed limit	3		
25	dropoff/pickup zone at entrances	pickup/dropoff zone	opportunities	At the gate			path/track making	3		
26	more sports equipment	sports	opportunities	At the gate			facilitator	3		

# HOW we distill insights



# What have we found so far?



A redesign of the pick-up/drop-off area

Parking at Badminton Club



Safer crossings



Walking School Bus



# What's next?



An aerial photograph of a multi-lane road. Two white cars are driving in the same direction. The road has white lane markings and a dashed yellow line. A large yellow graphic element is in the top left corner. The text "Questions, comments and feedback" is overlaid in white.

Questions, comments and feedback

*Let's go there* 



## Key insight sought from you:

- Groups or individuals you feel should be included in this project.
- What is the best way to engage with the local residents/groups and Mana Whenua? (Letter drops, Social media, Hui)

## Next steps:

- Local Board decision report
  - Confirm Local Board Support for project and Engagement plans
  - Set out next steps for local board engagement in the project

# Thank you.

For more information please contact:

**Antony Hing**, AT Konini School - Safer Streets Project Manager

Antony.Hing@at.govt.nz

**Allyn Sims**, AT Programme Manager

allyn.sims@at.govt.nz | +64 9 448 7526

*Let's go there* 

# 412 Scenic Drive Waiatarua



# Scenic Drive Swanson



# West Coast Rd



# Mountain Rd



# Titirangi







# WAITAKERE RANGES LOCAL BOARD

February 2023



## Introducing the Bulletin

The Bulletin is a monthly update to keep you informed about what happened in our area last month and about plans in the future.

## Local Impacts and Local Board views

### STORM EVENT ANNIVERSARY WEEKEND AND CLEAN UP

Here's the key messages:

- Our thoughts go out to Aucklanders, especially those hit hardest by the flood damage.
- We are doing our best to keep Aucklanders moving – but our thoughts are with those impacted directly.
- With more rain anticipated in Auckland over the next 48 hours we are expecting our roads and public transport to be under pressure, especially around peak travel times.
- This is an unprecedented weather event which means we must respond to changes across our network. Our teams are working hard to clear roads as quickly and as safely possible.
- Our network is operational but there are some limitations. Take care when travelling and consider your travel needs if you're heading out tomorrow.
- Plan, take care and drive to the conditions. Expect delays on public transport and on our roads. Be prepared for any further disruptions to your travel.
- Our public transport will be operating. The western and eastern train lines have had slips and services will be affected. KiwiRail are continuing their work to clear the tracks.
- Red wind warnings for Auckland Harbour Bridge tomorrow evening mean there is the potential for a bridge/lane closure.
- Some roads are still closed, but our main roads are open. Great North Road has one lane open in each direction which is a 50% reduction in lane availability which will impact travel time.
- Rising river and stream levels are now closing roads in Alfriston and Clevedon, along with Waiteitei Road in Wellsford. Scenic Drive suffered three large slips and there is managed access in place for residents.
- Expect delays and visit our website to find out which roads are still closed.
- We recommend you avoid the following roads:
  - Mill Flat Road
  - Tahekeroa Road
  - Ahuroa Road
  - Great North Road (Waterview)
  - College Road/Victoria Street/Beaumont Street
  - Shoal Bay Road (GBI)
  - Scenic Drive
  - Glenvar Road
  - Wiri Station/Roscommon Road intersection
  - Otitoro Road (Titirangi)
  - Sherwood Drive (Patumahoe)
- But most importantly, make sure you and your whanau are safe.
- And lastly, we would like to thank our road maintenance crews that have been working all hours to clear debris and drains, open roads, and urgent maintenance.

- For the latest information on road closures and public transport please check the AT website – [at.govt.nz/weatherwatch](https://at.govt.nz/weatherwatch)

## Laingholm Update 6 – February 2023

### RETAINING WALL ON LAINGHOLM DRIVE

Where	102 Langholm Drive, Laingholm Auckland
When (start date)	Tuesday 31 <sup>st</sup> January 2023
Hours of work	7 am to 7 pm
For (duration)	Approximately 9 weeks

#### The work we are doing.

In response to a watermain break and the subsequent under slip of the road in June this year, Ventia on behalf of Auckland Transport, are building a retaining wall on Laingholm drive. The work will involve removing the slipped material, then building a platform to build the wall from. Twenty-seven twelve-metre-long steel I beams, will be concreted in place along the thirty-meter (approx.) length of the wall. After this the watermain will be replaced and the footpath and road will be rebuilt. We'll do our best to start the work on time. Factors such as wet weather could mean a delay. If any delay is significant, we'll notify you.

#### Traffic flow and detours

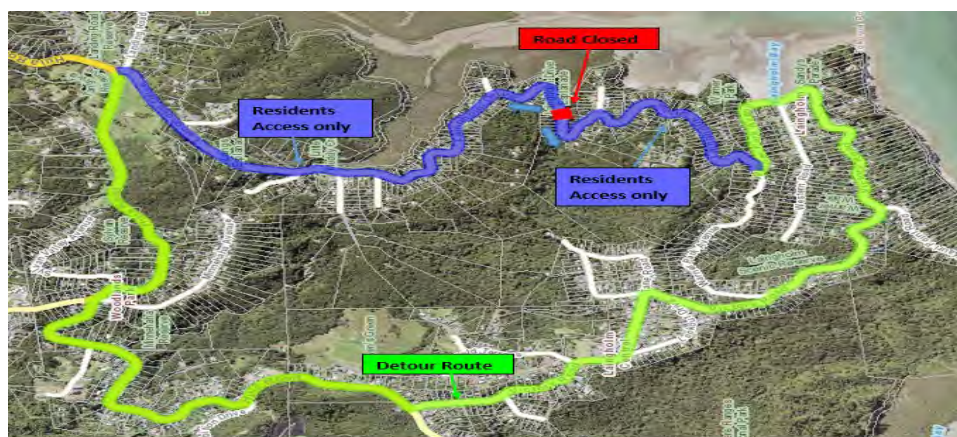
We will need to close this section of Langholm Drive while the work is underway. The detour which is unavoidable will be as it was in June when the issue first appeared. (PTO)

Given its narrow width, please avoid using, or parking on Warner Park Avenue.

Residents with driveways in the construction area will be contacted directly in the coming weeks.

Thank you for your understanding and co-operation whilst we carry out these essential works.

#### Work location map and Detour Route



#### Contact Us

Get in touch with us on 09 355 3553 if you have any questions or concerns about this work.

Or visit our website for Laingholm Drive updates: <https://at.govt.nz/laingholmslip>



## LIST OF PROPOSED BUS STOPS IN YOUR LOCAL BOARD AREA

Below is a table of proposed 2022/2023 financial year for your information.

Bus stop by Street Number	Street Address	Suburb
905	Swanson Road	Swanson
905 - Opp	Swanson Road	Swanson
30	Northfield Road	Waitakere
15	Northfield Road	Waitakere
66	McEntee Road	Waitakere
71	McEntee Road	Waitakere
2	McEntee Road	Waitakere
11	McEntee Road	Waitakere

## Road Safety Incidents in your Local Board Area

Waitakere Ranges -November 2022 - Serious Incident Closures and Deaths / Serious Injury										
ATOC/SCU	Incident Type	Day, Date, Time	Location	Collective Crashrisk & Road Type	Person killed or seriously injured	Death	Serious Injury	Local Board	Urban/Open	Speed Environment
SCU	Vehicle vs person on foot	Wednesday 23 <sup>rd</sup> November 2022, 12:10	Glendale Rd / Glenmall Pl, Glen Eden	Low Medium Arterial	Person on foot	1	0	Waitakere Ranges	Urban	50kmh

## Bus Service Disruption

BUS SERVICE DISRUPTION NOTIFICATION	
Location	Glendale Rd, Glen Eden
Type	Police Incident
Service Affected	154, 172
Impact	Glendale Rd is blocked between West Coast Rd & Oates Rd Detour via Oates Rd, Wilson Rd & Bowers Rd

## Local Board Transport Fund

In February 2023 I will be conducting a workshop with the local board on a list of projects the local board can work through in a priority list.

## Local Board Consultation for Proposed Improvements

Consultation documents for the following proposals have been provided to the Waitakere Ranges Local Board for its feedback and are summarised below for information purposes only.

After consultation, Auckland Transport considers the feedback received and determines whether to proceed further with the proposal as consulted on or proceed with an amended proposal if changes are considered necessary:

### **TITIRANGI ROAD AND SOUTH TITIRANGI ROAD, TITIRANGI - PEDESTRIAN SAFETY IMPROVEMENTS**

We recently sought your feedback on our proposal to upgrade the existing pedestrian crossing facilities at the intersection of Titirangi Road and South Titirangi Road. This proposal is funded and supported by the Waitākere Ranges Local Board Transport Capital Fund. Community feedback has closed. We are now connecting with you to let you know the outcome of this proposal.

#### **Proposal Outcome**

After reviewing all of the feedback we received, this project will proceed without changes to the next stage of detailed planning.

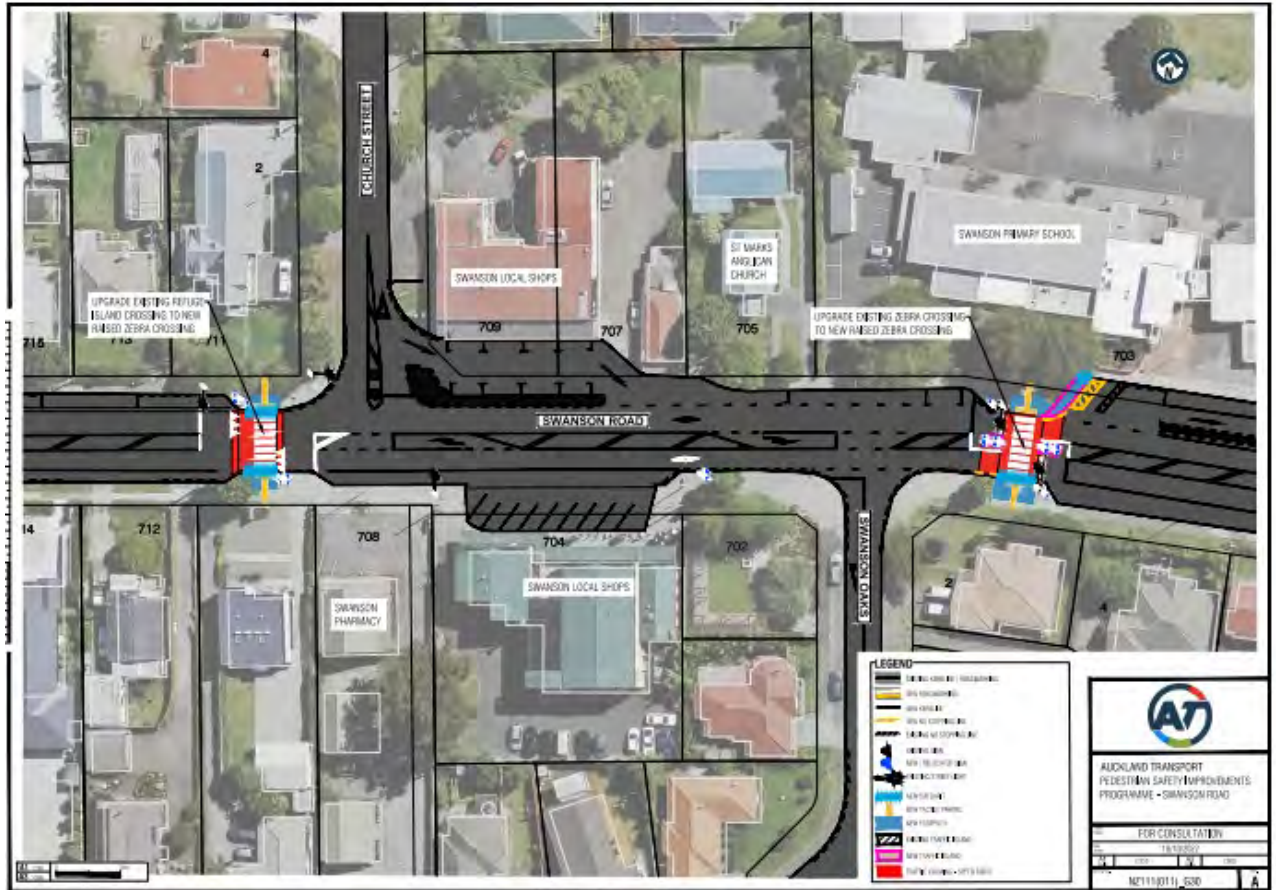
For more information, a summary of all the submissions we received and answers to questions and concerns, please [click here](#) to visit our website.

### **703 SWANSON ROAD, SWANSON - PEDESTRIAN SAFETY IMPROVEMENTS**

We are proposing to:

- Replace the school crossing that is level to the road surface outside 703 Swanson Road with a raised zebra crossing. We had a lot of feedback about the steepness of ramps, for that reason, we've made some changes to make sure the approach ramps at all our crossings are gentle.
- Replace the pedestrian island outside 711 Swanson Road to a raised zebra crossing.
- Install tactile pavers at all new crossing points. These are yellow guidance paving markers that help visually impaired people find their way to the crossing and safely cross the road.
- Install a new footpath to join the edge of the crossing outside 703 Swanson Road.
- Install signage and road markings so oncoming motorists know they are approaching a raised crossing and to slow down.

You can find more information on the back of this page, and a drawing showing the proposed changes has been sent with this letter.



## Titirangi Road and South Titirangi Rod, Titirangi - Pedestrian Safety Improvements

We recently sought your feedback on our proposal to upgrade the existing pedestrian crossing facilities at the intersection of Titirangi Road and South Titirangi Road.

This proposal is funded and supported by the Waitākere Ranges Local Board Transport Capital Fund. Community feedback has closed. We are now connecting with you to let you know the outcome of this proposal.

### Proposal Outcome

After reviewing all the feedback we received, this project will proceed without changes to the next stage of detailed planning.

For more information, a summary of all the submissions we received and answers to questions and concerns, please to visit our website.

## Local Board Issues Being Investigated

The Local board have requested the following issues be investigated. These are still under investigation:

- Piha Life Saving Parking
- Charging Stations in Glen Eden
- Blocked culverts and drains on Forest Hill Road and a part of Scenic Drive
- Manhole cover outside 8A Pleasant Road
- Sunnyvale Cycle Park Safety Issues
- Tanekaha Road, Titirangi Retaining Wall

- Anawhata Road ongoing maintenance issues
- 278 Bethells Road sealing request
- Otitori Bay Road Issues

## Workshops and Community meetings held with the Waitakere Ranges Local Board

Auckland Transport have held the following workshops with the Local Board in October to December 2022.

- AT Monthly Update
- AT Introduction Session
- AT Forward Works Programme
- Anawhata Road Local Board and Resident meeting

## Auckland Transport's Traffic Control Committee (TCC) report

Date	Street (Suburb)	Type of Report	Nature of Restriction	Decision
1 Oct 22	West Coast Road / Parris Cross Road / Glengarry Road / Selak Place / Road A / Road B / Road C, Glen Eden	Permanent Traffic and Parking changes	No Right Turn / Lanes / Lane Arrow Marking / Shared Path / No Stopping At All Times / Loading Zone / Bus Stop / Bus Shelter / Traffic Island / Road Hump / Pedestrian Crossing / Footpath / Give-Way Control / Roundabout / Flush Median	<b>APPROVED IN PRINCIPLE</b>
1 Oct 22	Ryden Place / Milan Drive, Glen Eden	Permanent Traffic and Parking changes	No Stopping At All Times	<b>CARRIED</b>
1 Oct 22	Glenmall Place	Permanent Traffic and Parking changes	Temporary Traffic And Parking Controls	<b>CARRIED</b>
1 Nov 22	Claywest Place / Meg Lane, Glen Eden	Permanent Traffic and Parking changes	No Stopping At All Times / Road Hump / Traffic Island / Edge Line / Footpath / Give-	<b>CARRIED</b>

			Way Control / Bus Stop / Bus Shelter	
<b>1 Nov 22</b>	Glengarry Road / Shetland Street / Matama Road / Rosier Road, Glen Eden	Permanent Traffic and Parking changes	Give-Way Control / Stop Control / Road Hump / Footpath / No Stopping At All Times / Pedestrian Crossing / Traffic Island / Flush Median / Angle Parking / P15 Parking / P10 Parking / P60 Parking / Lanes / Lane Arrow Marking / Edge Line / Removal Of Bus Shelter	<b>CARRIED</b>

## Auckland Transport (BIDs) Update – Dec 2022

Auckland Transport will report on our engagement with the BIDs in the Waitakere Ranges Local Board area on a Monthly basis:

### Glen Eden Business Association

- Updated the Business Association about bollards being installed around the footpath outside 64 Glenmall Place. This comes from a request raised by the Business Association, to improve pedestrian safety and protect trees.
- Provided updates to the Business Association about the Laingholm Slip and repair work, as a number of the Association come from that location.

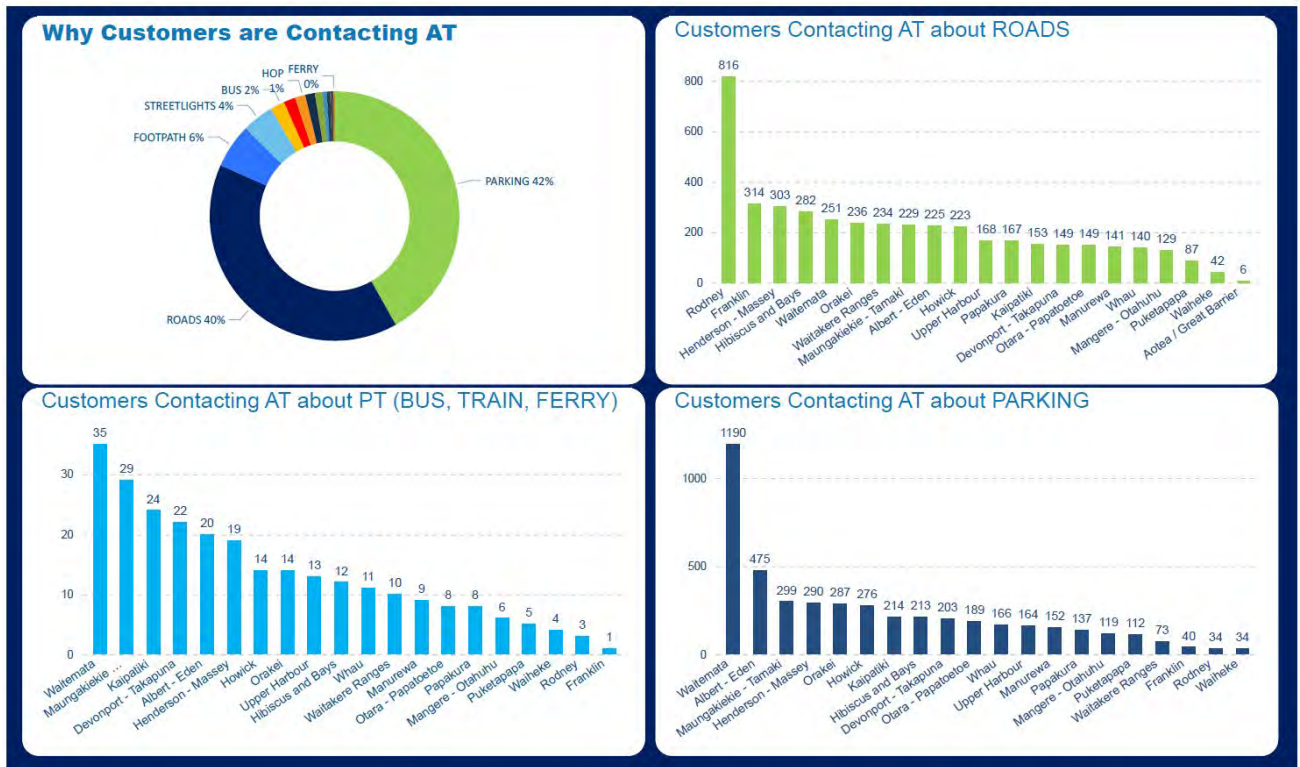
## Regional Updates

The following are brief updates about projects in this area.

### Why Aucklanders contact Auckland Transport

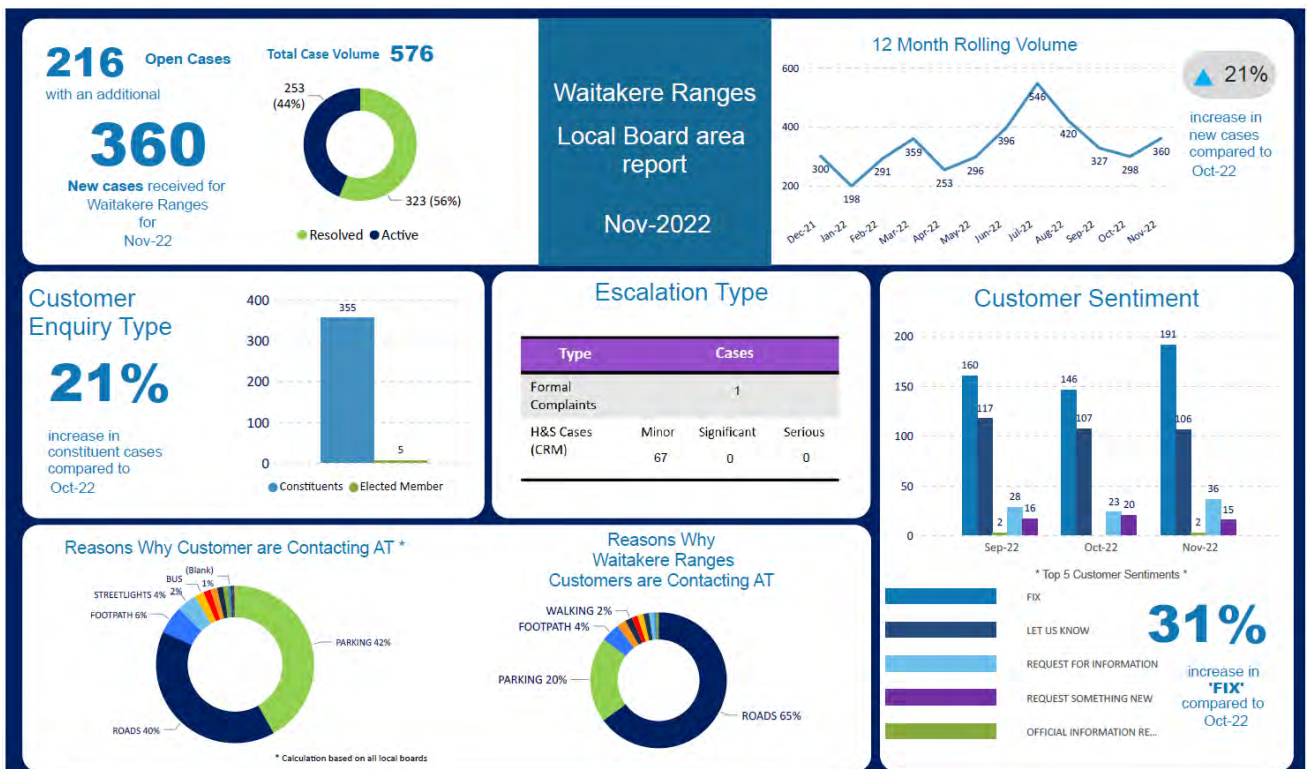
Below is a summary of the reasons why people are contacting Auckland Transport's customer service teams across all of Auckland. The data is summarised by issue and by how key issues like parking effect all of Auckland's local boards.





## Local customer activity

This section tells you what people are contacting Auckland Transport about this month in this area. It is to help decision-makers see trends and to inform their planning. In November 2022, 360 Waitakere Ranges residents contacted Auckland Transport and their concerns are summarised below:



## **CAMPAIGN INFORMER: ADULT BIKE SKILLS COURSES, KIDS LEARN TO RODE, GUIDED RIDES**

### Purpose

Adult Bike Skills and Kids Learn to Ride are AT's established free community cycle training courses which are run across the Auckland region. Guided Bike Rides are a relatively new offering from AT and are escorted group rides on Auckland's network of cycle paths. The courses and rides will be delivered over three blocks (Spring, Summer, and Winter) with the Spring series now available for booking on the AT website

### Background

The Spring series of skills courses, and guided rides, run from 1 October through to mid-December. There are over 60 Adults Bike Skills courses, 20 Kids Learn to Ride drop-in sessions and 20 guided rides. AT is running a campaign to let Aucklanders know about these and drive registrations and attendance. The campaign will include advertising across social media and radio plus will be promoted in the cycling newsletter, and brochures/ posters distributed through the community channels.

### What are our key messages?

- Auckland's a whole new city by bike. Join the fun with a skills course or guided ride from AT
- Come along to one of our free kids learn to ride drop-in sessions. Whether starting on a balance bike or making the transition to a pedal bike, AT's team of qualified instructors are there to help.
- Register now at [AT.govt.nz/cyclingevents](https://at.govt.nz/cyclingevents)

### Adult Bike Skills course:

Adults who would like to learn how to ride a bike, improve their bike handling skills, learn maintenance skills, and to learn more about e-bikes

### Kids learn to Ride

- Families with kids aged 2-8 years old
- Those that live close to the event sessions: Pakuranga, Mangere, Papakura, Mt Roskill, Forest Hill, Avondale

### Guided bike rides

Adults with a primary focus on newer riders who want to improve their confidence and explore by bike in a safe environment

Locations: Henderson, New Lynn, Waterview, Mangere

## **COMMUNITY CONNECT – SOFT LAUNCH – 15 November 2022**

This brief provides details of the soft launch of Community Connect in Auckland.

### **Background**

- Community Connect (previously the Green Card) originated from the Green Party's 2017 election policy proposing a concession of 50% discount off full adult fares on public transport for Community Service Card (CSC) holders.
- Initially to be trialled over a three-year period in Auckland, the Government announced that Community Connect would be rolled out across the country on 1 September 2022 as part of a \$1 billion cost of living package to support low- and middle-income New Zealanders.

- This was deferred by the Government until 1 February 2023 due to the extension of Half Price Fares which are currently available until 31 January 2023. This initiative has saved Aucklanders \$10 million on public transport fares.
- Capital costs associated with Community Connect, as well as on-going operational costs (including foregone revenue) will be funded by the Crown.

#### **Benefits:**

- Community Connect will help improve transport equity. Low-income earners spend a greater proportion of their income on transport than higher income earners. Reducing the cost of public transport for low-income earners would address this imbalance and make it easier for people to access economic and social opportunities.
- Community Connect will help encourage mode shift which will work towards reducing congestion across the network and support Auckland's Climate Plan objectives.

#### **Community Connect in Auckland:**

- From 15 November 2022, eligible CSC holder will be able to apply for the Community Connect concession providing 50% discount off travel off most public transport services from 1 February 2023 when Half Price Fares ends.
- The concession will not be eligible on non-AT services:
  - Waiheke Island and Rakino Island ferry services
  - Inter-regional bus services
  - Te Huia and Northern Explorer train services
- The concession will be delivered via the AT HOP ticketing system in the same way SuperGold card concessions are currently applied, rather than via a separate card.
- AT HOP cards will be issued free of charge to CSC cardholders if they do not already hold one, removing a possible barrier to entry for some Aucklanders.
- Data from Ministry of Social Development (MSD) shows that there are approximately 300,000 CSC holders in Auckland.

#### **Communications and engagement**

- The Minister of Transport and the Minister of Social Development will issue a joint media release on 15 November 2022.
- In the lead up to the concession becoming live, AT will engage with key community groups and local media.

#### **SMALL PETS NOW BOARDING ON BUSES**

Travelling on a bus? All of AT's bus services are now welcoming small pets in a suitable pet carrier.

Following on from the [success of pets on trains](#), customers will be able to bring small domestic pets in approved carriers on their laps – from December 26 this year.

This will be for a trial period of six weeks, after which time AT will look to allow larger dogs in approved muzzles on-board buses as well.

Group Manager of Metro Services, says train customers have enjoyed bringing their furry friends on-board since 2020 and after consultation with bus operators and drivers, it's now time for buses to allow the same. In the coming months, we know there will be many regular train customers who will be taking buses instead - due to KiwiRail's Rail Network Rebuild programme - so we wanted to provide pet owners with the same service on our buses that they have enjoyed on trains.

This is another fantastic step towards making Auckland a more pet-friendly city. We are finally catching up with international cities where pets are welcome on all forms of public transport.

**Full details and conditions:**

- Pets can only travel on buses at off-peak times (Between 9am and 3pm; and then after 6.30pm to the end of service on weekdays, and all-day weekends and public holidays).
- Domestic pets are to be enclosed in a suitable pet carrier that is small enough to be stored securely under the seat or held on the passenger's lap.
- Passengers travelling with domestic pets are responsible for their pet and must keep them caged and under control at stations, getting on or off the bus, and while on-board the bus
- Passengers travelling with domestic pets are responsible for all pet mess and must ensure that any pet mess is cleaned up before they get off the bus.
- Passengers may be refused entry to board the bus if it is full
- Passengers may be asked to leave the bus with their domestic pet if the animal is causing, or likely to cause, a safety risk or nuisance to other customers
- Domestic pets travel free of charge on our services.
- Pets are not permitted on school buses or the upper deck of any bus.
- You may be asked to move if an assistance dog boards – to avoid it being distracted by other animals.
- Only one pet per person allowed.

**THE GAME PLAN COMPLETE**

After speed, alcohol is the second biggest contributing factor to road crashes in NZ. In Auckland between 2016-2020 there were 88 deaths and 520 serious injuries due to impaired driving caused by drugs and alcohol. As a Vision Zero region we're aiming for no DSI (deaths and serious injuries) on the roads so there is a need to encourage behaviour change to stop Aucklanders drinking and driving. There is no safe limit when driving.

AT's *Game Plan Complete* campaign encourages Aucklanders to plan their safe ride home before they head out drinking, whether that be a sober driver, an Uber, or a bus.

The Community Transport team will also be out and about in December running engagement activities including Police checkpoints giving out flyers and lollies etc with key messaging.

The Game Plan Complete campaign was developed and run a year ago with the aim of getting Aucklanders to consider their safe ride home as part of their overall plans. We want them to make sure their 'game plan' is complete – no night out is complete without a safe plan to get home.

The campaign focuses on a group of mates and one of them (Ben) is allocated the job of making sure they all have a safe ride home. There are also social and radio executions that specifically target females.

We will be running this campaign again but with some new media channels and a new radio ad that's targeted at males.

Game Plan Complete – sort your safe ride home before you head out.

Males 15-39 (majority 20-29)

Secondary is 30-54 including females (the older cohort are more likely to be the ones who don't get caught and may frequent places like RASs, boat clubs, sports clubs etc).

In market w/c 5<sup>th</sup> December 2022 through until mid-February 2023, to cover the main festive/party/summer season.

There is a small second burst booked for social in April 2023 in line with the winter sports season.

To: Board Chair, Waitākere Ranges Local Board

From: Owena Schuster

Date: 1 February 2023

Subject: Local Board Transport Capital Fund

---

## Introduction

As part of the induction to the Local Board Transport Capital Fund (LBTCF) for the incoming local board, there is important information to help understand the purpose of the fund and the decision-making process for the local board to determine projects to deliver. This information will enable the local board to better understand how it can obtain the best value from the fund and how it can work collaboratively with Auckland Transport (AT) to achieve effective and efficient project outcomes.

This memo contains information under these three main headings:

1. Background (and purpose) of the LBTCF; and
2. Indicative timeline for decision-making process to June 2023
3. Example projects that have been completed and rough order of costs.

## Background

AT manages the LBTCF on behalf of local boards. Auckland Council established this fund to provide local boards with an independent budget that they can use to deliver small projects in their areas that do not feature highly in AT's prioritization process. The budget is currently at \$45m across all local boards for the 3-year electoral term and is subject to change.

The programme commenced in late 2012 following a resolution by the Auckland Council Strategy and Finance Committee. The following criteria for projects were set:

- The project must be technically deliverable and within the road corridor.
- Meets transport safety criteria.
- Does not compromise the transport network.
- Is not part of an asset renewal programme.
- To encourage scale and effectiveness project budgets can be bundled by carrying budget over financial years or bringing budget forward from future years.

The fund can also be used to deliver projects outside the road corridor providing the projects support connectivity of cycleways and footpaths within the transport network.

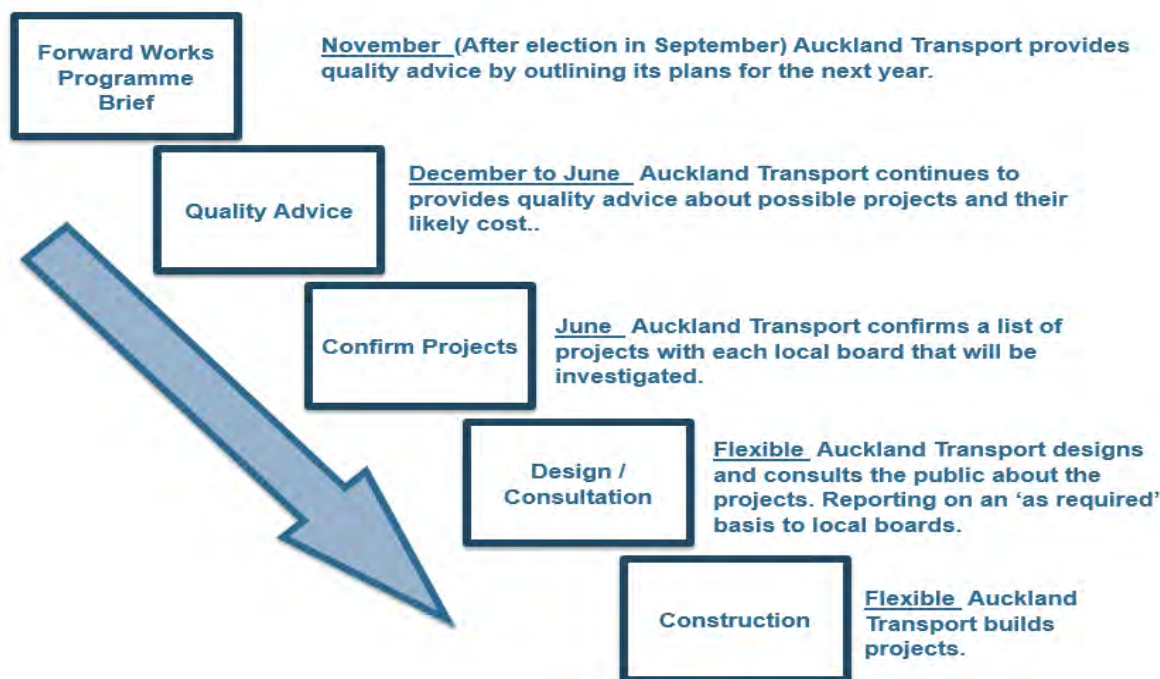
## Indicative timelines for decision-making 2023

AT has a schedule to provide local boards with quality advice and to manage the decision-making and delivery process. The structure is based on local board's triennial electoral term and is as follows:

- **Initial briefing: November/December of election year:** Immediately after it is elected the local board is briefed about planned work in a Forward Work Programme briefing.
- **Quality advice: By end of April 2023:** AT provides quality advice to local boards about possible LBTCF projects and rough estimates of cost for projects. We are looking to hold the first workshop in February to develop a long list of project ideas. This long list will be developed from the list of candidate projects provided by AT and any new project ideas identified by local board members (Appendix 1).
- **Resolve projects:** By June of the year after the election: The local board identifies a list of projects that it wants AT to deliver. All projects are initiated by resolutions of the local board.
- **Design process undertaken: From June of the year after the election until complete:** AT works with each local board informing and reporting on an as-required basis to develop project designs. This process includes public engagement about the projects (note that for efficiency and effectiveness these projects should be part of the consultation on the Local Board Plan where possible). This sets the scene for the LBTCF to contribute to meeting the local board's wider objectives.
- **Construction approved:** AT returns to the local board with finalised designs and firm estimates of cost and the local board authorises construction by resolution.
- **Projects delivered.**

The process below is a rough guide and can be modified based on local board preferences, funding, and design considerations. However, by working to this rough timeline AT and Local Board Services maximise the ability of AT to deliver a successful and timely programme of work that is integrated with local board objectives.

Figure 5: Local Board Transport Capital Fund process diagram



## Example projects

Below is a list of typical projects delivered through the Local Board Transport Capital Fund. Projects are not limited to these types, but this will hopefully give Local Board members an idea of costs associated with projects.

Project Type	Construction	Investigation and Design	Contingency 20%	Total estimated cost
Ped refuge with pram crossings and lighting	\$ 100,000	\$ 30,000	\$ 20,000	\$ 150,000
1 Speed hump with lighting	\$ 30,000	\$ 9,000	\$ 6,000	\$ 45,000
1 Raised table with lighting	\$ 150,000	\$ 45,000	\$ 30,000	\$ 225,000
Raised zebra crossing with drainage treatment and lighting	\$ 250,000	\$ 75,000	\$ 50,000	\$ 375,000
Mini-roundabout	\$ 400,000	\$ 120,000	\$ 80,000	\$ 600,000
Full-size roundabout	\$ 1,500,000	\$ 450,000	\$ 300,000	\$ 2,250,000
Signalise intersection	\$ 1,000,000	\$ 300,000	\$ 200,000	\$ 1,500,000
Midblock raised signalised crossing	\$ 400,000	\$ 120,000	\$ 80,000	\$ 600,000
Bus shelter	\$ 40,000	\$ 12,000	\$ 8,000	\$ 60,000



# Memorandum

---

## Next steps

As you know, a workshop between AT and the local board has been scheduled in February 2023 to discuss candidate projects for FY2023/24 that can be considered by the local board. The list of candidate projects will be sent to you prior to the workshop to allow sufficient time to give due consideration to your options. At that time, AT will provide any quality advice to support to the decision-making process. In the meantime, please contact me if you have questions or need further information.

Regards,

Owena Schuster, Elected Member Relationship Partner

# Memorandum

## Appendix 1 – Project Ideas

Local Board	Project Name	Address	Project origin if known	Project Description/ Comments/ History	Current AT programme	Cost estimate including design cost
Waitākere Ranges	Captain Scott Rd speed-calming	Between the intersections of Oates Road and Savoy Road	Local board/ Councillor request	This section of Captain Scott Rd was used to trial an on-road cycleway and speed calming which has since been removed. The general feedback from the community was they did not like the on-road cycleway (and associated parking loss) but there was positive feedback from the board with regards to the traffic calming. Vertical speed calming measures, gateway treatments, crossing points, driver feedback signs.	MIP	\$300,000
Waitākere Ranges	Glengarry Road Footpath Improvement	32 Glengarry Rd, Glen Eden	Public request	At number 32 the footpath has significant crossfall, which has led to multiple wheelchair users to fall (hospitalised) at this location. The project scope is to identify ways to regrade/ realignment of this footpath without impacting on the driveway of property 32.	MIP	\$80,000

# Memorandum

Waitākere Ranges	Godley Rd Driver feedback Sign	Near #207 Godley Rd, Titirangi	Local board/ Councillor request	Speeding issues have been identified by customers on Godley Road, 85th Percentile speeds in Jul 21 are 58.1 km/h from traffic counts. Install a new driver feedback sign for the westbound approach traffic heading towards Titirangi Road.	MIP	\$20,000
Waitākere Ranges	Pooks Rd, raised zebra crossing	18 Pooks Rd, Ranui	Public request	Concerns raised from residents about existing raised table would like it converted to a raised zebra crossing.	MIP	\$250,000
Waitakere Ranges	Glen Eden Train Station to Upper Waikumete Stream Walk and Cycleway (old LBTCF project)	Glen Eden Train Station	Local board/ Councillor request	Previous term LBTCF project for investigation only. Need to check if additional funding is required to fund this as a new project.	LBTCF	TBC-previous budget \$20,000
Waitākere Ranges	Parrs Park to Sunnyvale shared path (old LBTCF project)	Parrs Park to Sunnyvale shared path	Local board/ Councillor request	Previous term LBTCF project for investigation only. Need to check if additional funding is required to fund this as a new project. Some indicative costs (\$450k)	LBTCF	TBC-previous budget \$20,000

# Waitākere Ranges

## Local Board Transport Capital Fund 2023-2026

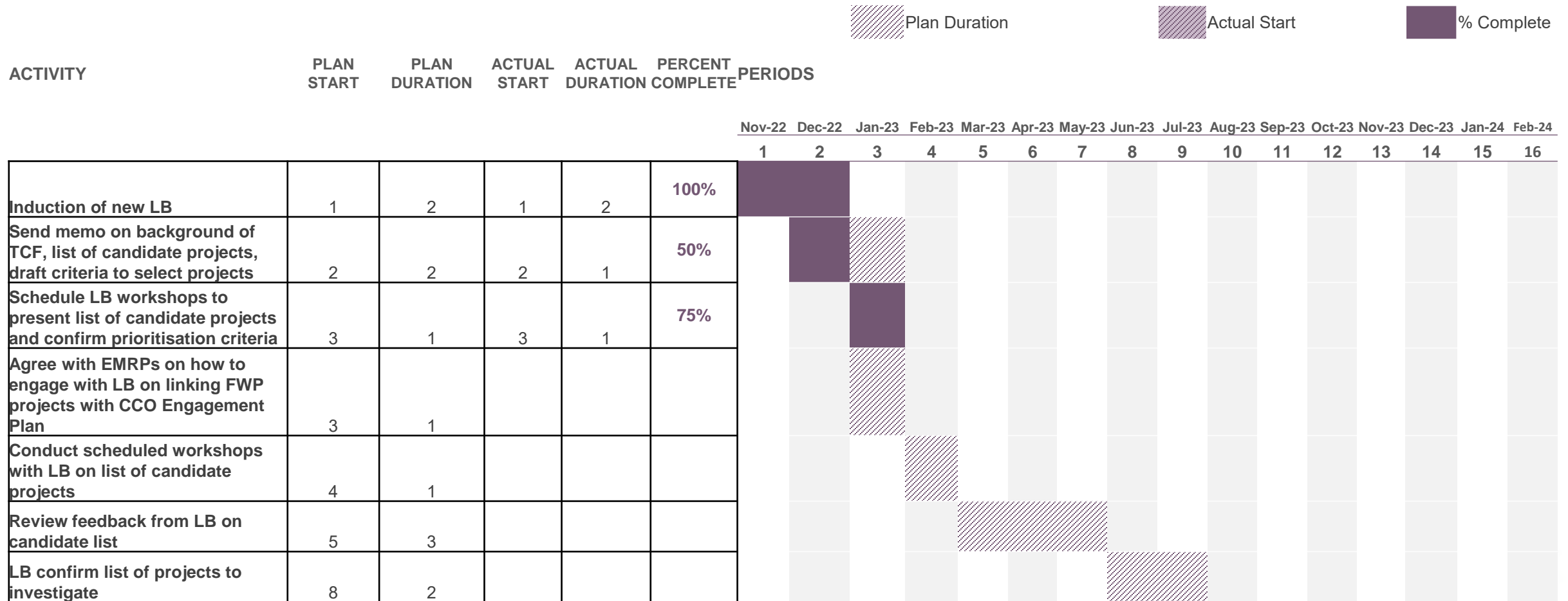
9 February 2023 – Workshop 1

# Introduction

- The Local Board Transport Capital Fund (LBTCF) was initiated in 2012 to ensure locally important transport projects are given appropriate priority, and to provide local boards with more direct ability to influence local transport projects.
- For projects to be funded using the LBTCF, the following criteria must be met:
  - The project must be technically deliverable and within the road corridor.
  - Meets transport safety criteria.
  - Does not compromise the transport network.
  - Is not part of an asset renewal programme.
  - projects outside the road corridor can be funded provided the projects support connectivity of cycleways and footpaths within the transport network.
- An indicative budget of \$1.46m has been set for Waitākere Ranges Local Board 3-year term.
- Over the coming months AT will work with Local Boards to identify projects, prioritise these projects and pass resolutions approving budget allocations.



# Indicative timeframes



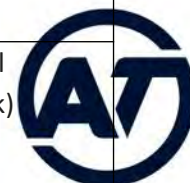
# Purpose of workshop

- For the local board to provide projects it wishes to consider for LBTCF funding.
- To discuss some potential projects that are identified by teams within Auckland Transport but are not planned for 2023-2026 financial years, due to lack of funding.
- Local Board to provide feedback on proposed criteria for project prioritisation.



# Project Ideas

Local Board	Project Name	Address	Project origin if known	Project Description/ Comments/ History
Waitākere Ranges	Captain Scott Rd speed-calming	Between the intersections of Oates Road and Savoy Road	Local board/ Councillor request	This section of Captain Scott Rd was used to trial an on-road cycleway and speed calming which has since been removed. The general feedback from the community was they did not like the on-road cycleway (and associated parking loss) but there was positive feedback from the board with regards to the traffic calming. Vertical speed calming measures, gateway treatments, crossing points, driver feedback signs.
Waitākere Ranges	Glengarry Road Footpath Improvement	32 Glengarry Rd, Glen Eden	Public request	At number 32 the footpath has significant crossfall, which has led to multiple wheelchair users to fall (hospitalised) at this location. The project scope is to identify ways to regrade/ realignment of this footpath without impacting on the driveway of property 32.
Waitākere Ranges	Godley Rd Driver feedback Sign	Near #207 Godley Rd, Titirangi	Local board/ Councillor request	Speeding issues have been identified by customers on Godley Road, 85th Percentile speeds in Jul 21 are 58.1 km/h from traffic counts. Install a new driver feedback sign for the westbound approach traffic heading towards Titirangi Road.
Waitākere Ranges	Pooks Rd, raised zebra crossing	18 Pooks Rd, Ranui	Public request	Concerns raised from residents about existing raised table would like it converted to a raised zebra crossing.
Waitakere Ranges	Glen Eden Train Station to Upper Waikumete Stream Walk and Cycleway (old LBTCF project)	Glen Eden Train Station	Local board/ Councillor request	Previous term LBTCF project for investigation only. Need to check if additional funding is required to fund this as a new project.
Waitākere Ranges	Parrs Park to Sunnyvale shared path (old LBTCF project)	Parrs Park to Sunnyvale shared path	Local board/ Councillor request	Previous term LBTCF project for investigation only. Need to check if additional funding is required to fund this as a new project. Some indicative costs (\$450k)





# Project prioritisation criteria

- It is proposed that the following criteria be used to prioritise projects:
  - Mode Choice - Relates to an activities impact on improving access to destinations that will encourage people to walk, cycle, use PT, etc.
  - Safety - Relates to how an activity can address a crash risk issue and is measured by deaths and serious injury crash reduction.
  - Local board alignment - Relates to the level of alignment with local board plan outcomes (As these are yet to be finalized 2020 plan objectives/key initiatives will be used)
  - Cost - A cost factor rating will be used to ensure projects are also measured for value for money.
- AT would like Local Board feedback on whether they support the criteria above or would prefer other criteria be used.



# Next steps

- AT to prepare feasibility checks and rough costings for projects agreed at this workshop
- Workshop 2 to be set up in May/June to present feasibility findings, rough cost estimates and proposed project prioritization.
- Decision report to be submitted to June/July business meeting for budget allocations.





*Let's go there*



# Update: Flood Response

Waitākere Ranges Local Board

9 February 2023

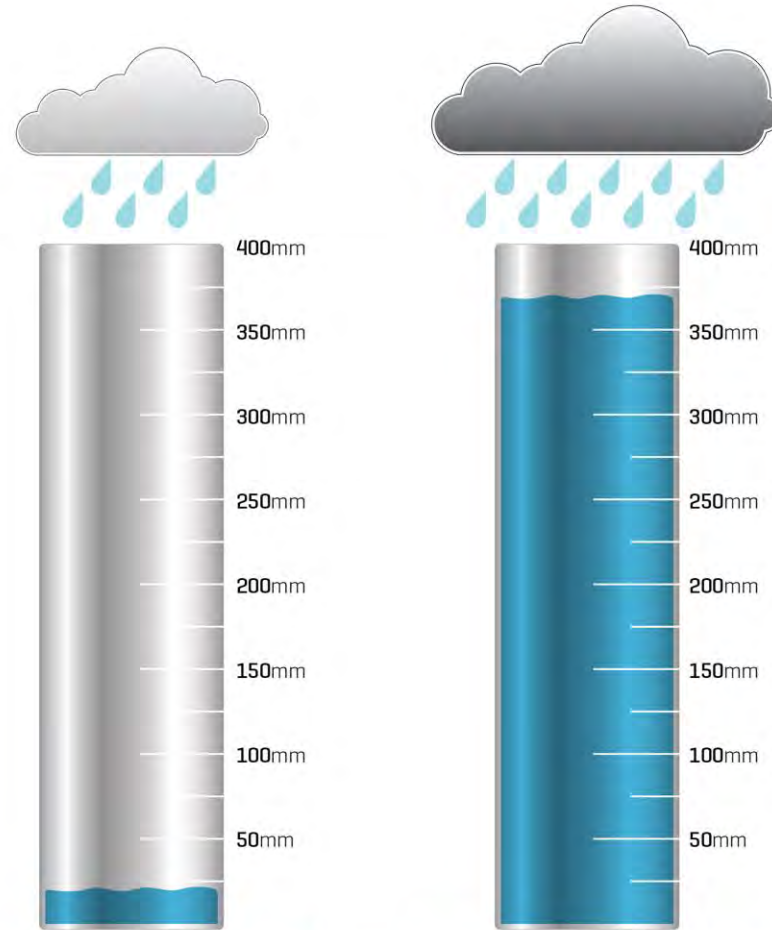
# January 2023

## NIWA Climate Extremes



Wednesday, 25 January – Tuesday, 31 January 2023

# Upper Nihotupu Rain Gauge



normal: 23mm

actual: 370mm

## Upper Nihotupu Dam

Rainfall over the past 7 days, Wednesday to Tuesday

# Timeline

**26 January**  
Heavy rain  
warning

**27 January**  
**4.30pm**

Police issue  
warning -  
significant  
flooding out  
West

**27 January**  
**5.45pm**

AEM post to  
Facebook re  
worsening  
weather

**27 January**  
**6.21pm**

FENZ has  
received 500  
calls for help

**27 January**  
**10.18pm**

AEM confirm  
State of  
Emergency

**27 January**  
**3.52pm**

MetService  
warning  
surface  
flooding

**27 January**  
**5.00pm**

AEM consider  
declaring  
emergency

**27 January**  
**5.50pm**

MetService  
issue severe  
thunderstorm  
warning

**27 January**  
**8.24pm**

FENZ has now  
had over  
1,000 calls for  
help



# Watercare's Response

## Priorities

Watercare's wastewater networks and treatment plants were overwhelmed by stormwater, causing numerous overflows across Auckland.

We prioritised:

- Restoring water supply to our customers.
- Overflows that were damaging private property.

# Communications – Public / General

## Social Media

**Watercare**  
★ Favourites · 30 January at 19:04 · 🌐

Kia ora everyone. We've made good progress today resolving water supply issues in West Auckland. Many customers in Glen Eden and Titirangi had water restored. 🙌 We encourage customers in wider Titirangi to be prepared for intermittent water supply issues over the coming days as we are likely to find more damage to our networks caused by slips. Our crews will need to turn off the water supply for short periods of time in localised areas as they fix the damage.

**Glen Eden & Titirangi customers**  
We've made good progress

**Watercare**  
★ Favourites · 30 January at 09:48 · 🌐

Kia ora everyone. The slip on Scenic Drive has been fixed and we are working to restore water to customers in South Titirangi. We are aware that homes have low water pressure and we apologise for your patience. If you're in this situation, we have a link to <https://tinyurl.com/2f64sf7>

**Green Bay, Wood Bay,  
South Titirangi, Glen Eden  
and Waiaatarua**  
Update for customers

**Watercare**  
★ Favourites · 29 January at 17:52 · 🌐

Kia ora Titirangi customers. Here's the list of water tankers on-site this evening 🙌

- 717 South Titirangi Road
- Bottom of Tawini Road
- 1 Cochran Road, Oratia
- 4 ... See more

**Titirangi customers**  
Water tanker locations for  
Sunday evening

**Watercare**  
★ Favourites · 29 January at 14:51 · 🌐


For our Waiaatarua and Oratia customers. This road slip has caused a pipe break and interrupted supply from the Bush Rd reservoir. You may have no water or low pressure until the fault is fixed. Crew expect the repair to take a further 12hrs. Thank you for your patience 🙌 For updates 🙌 <https://tinyurl.com/425xnp9z>



# Specific updates

## Communications – Local Board

UPDATE: Restoration of West drinking water

 EStewart (Elizabeth)

To: Greg Presland (Waitākere Ranges Local Board); Linda Potauaine (Waitākere Ranges Local Board); Liz Manley (Waitākere Ranges Local Board); Mark Allen (Waitākere Ranges Local Board); +2 others

Cc: Kelston.eo@parliament.govt.nz; Dr Deborah Russell; Councillor Shane Henderson; Councillor Ken Turner; Shriya Bhagwat; BHalliwell (Ben)

Tue 31/01/2023 3:10 pm

You forwarded this message on 31/01/2023 3:20 pm.

Kia ora koutou,

Thank you all for being in contact about water outages out West.

### Current situation

- The good news is there should be no outages by 5pm
- Watercare will be going out with customer surveys tomorrow
- There are a couple of small pockets of customers who are still knocking – this is business as usual for Watercare in these areas

### Community information

- The Watercare website has rolling updates here: [link](#)
- In terms of social media we've still got the tanker locations

- 717 South Titrangi Road
- Bottom of Tawini Road
- 1 Cochran Road, Oratia
- 4 Shetland Street, Glen Eden
- 66 Avonleigh Road, Green Bay - MetLife Care
- Glendale Road, Glen Eden - Scout Group
- Corner of Kotinga and Puketitiro Street, Glen Eden
- Corner of Withers and Paewai Rd, Glen Eden

The tankers will be there until around 9.30pm this evening.

### What next?

- Customers do need to be prepared for intermittent water supply by slips, and more the next round of severe weather
- We can only locate leaks as the water starts to flow through the pipes
- Our crews may need to turn off the water supply for some areas

### Reporting faults

- The best way to report a fault is still using the online form
- Or you can report it online [here](#).
- If neither of those options work for a customer they can still phone through a fault on 09 442 2222.

Please let me know if you require further information.

Drinking water in the west

 EStewart (Elizabeth)

To: Greg Presland (Waitākere Ranges Local Board); Linda Potauaine (Waitākere Ranges Local Board); Liz Manley (Waitākere Ranges Local Board); Mark Allen (Waitākere Ranges Local Board); +2 others

Cc: Brett Lane (Brett.Lane@aucklandcouncil.govt.nz); Councillor Shane Henderson; Councillor Ken Turner; Dr Deborah Russell; carmel.sepuloni@parliament.govt.nz; BHalliwell (Ben)

Wed 1/02/2023 11:13 am

You forwarded this message on 1/02/2023 11:25 am.

Kia ora koutou,

I wanted to reiterate that Watercare's treatment plants and networks held up well overnight.

**Tap water remains safe to drink.** Watercare has increased sampling in the network and the results are compliant with drinking water standards.

Please if you see any comments on socials do reiterate that tap water remains safe to drink and feel free to tag in @Watercare so we can address any concerns directly.

Ngā mihi,

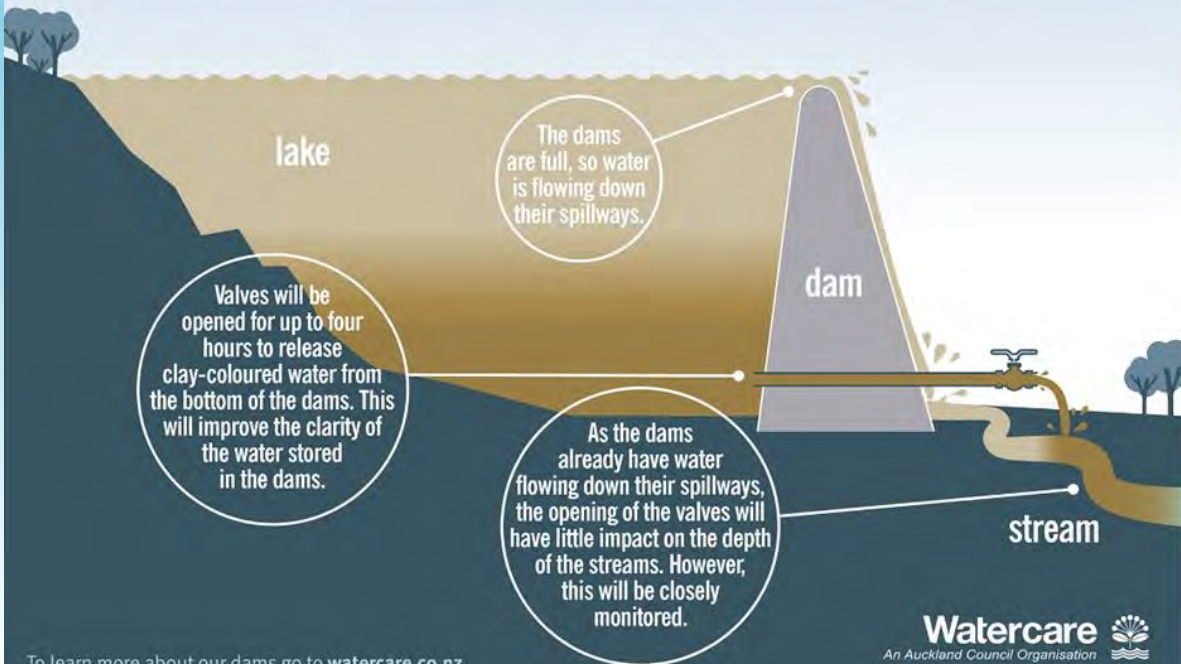
**Elizabeth Stewart** | Elected Member Relationship Advisor  
External and Strategic Relations

Watercare Services Limited  
Mobile: 021 759 152

# Waitākere Dams



## Improving the clarity of the water in the dams



To learn more about our dams go to [watercare.co.nz](http://watercare.co.nz)

## Improving water clarity

The water in our dams was affected by landslides.

The level of turbidity (dirtiness) rose, making it harder for the local treatment plants to process.

Lower Nihotupu and Upper Nihotupu Dams were temporarily taken out of service.

Water was released from free discharge valves at the bottom of the Lower Nihotupu and Lower Huia dams for a short period to help improve water quality within the lakes.

# Integrated networks

## The following areas were impacted

- Glen Eden
- Green Bay
- Kay Road
- Konini
- Oratia
- Paturua Road
- Scenic Drive
- Titirangi
- Waima
- Woodlands Park



Impacts in  
your rohe



## Reconfiguring the network

In Auckland, we are fortunate to have a highly integrated network.

The Watercare team focused on reconfiguring the network to limit customer impact.

This means that when a watermain breaks, we can often reconfigure the network to limit the impact on customers.



## What next?

### Recovery

The job of cleaning up Auckland is a big one. It will take some time and we know there are many Aucklanders who continue to need help.

It's important to note that Watercare is fully committed to repairs, clean-up and recovery. At most of our significant sites there are also serious safety concerns.

Watercare are working through a list of slips and remedial work required in your local board area.

Questions?